

2024



Adrian Fisher Design

The world's most prestigious mazes

World Leading Maze Design

Adrian Fisher Design Ltd, founded by maze pioneer Adrian Fisher, leads the world in creating captivating mazes. From the grandeur of Blenheim Palace, England to the iconic landmark The Jewel at Singapore International Airport, and even on-screen appearances in films like Saltburn, our innovative designs have left an indelible mark. Since 1979, we've crafted over 700 mazes worldwide, setting the standard for excellence in maze design.



Our Process



PHASE 1

Scoping

Collaborate, evaluate,
and provide estimates

PHASE 2

Creative

Design, review,
and iterate

PHASE 3

Implementation

Execute, construct,
and go-live

Phase 1: Scoping



Our Scoping Phase lays the foundation for a successful maze design project, setting the stage for creativity, collaboration, and ultimately, the realization of your vision.

During the Scoping Phase, we will:

- Analyze site details for optimal maze layout
- Collaborate closely on your concept and theme
- Evaluate budget for feasible design options
- Develop a unique conceptual design
- Develop an early stage functional plan
- Provide a project cost estimate range
- Provide a design fee estimate based on project scope

Phase 2: Creative



In the Creative Phase, we meticulously design every aspect of the maze, from pathways to interactive features, ensuring alignment with your theme and vision.

During the Creative Phase, we will:

- Design the maze network with entrance and finale experiences, keynote features and interactives
- Custom-design the maze difficulty to engage participants at different skill levels
- Craft the goal area with unique features enhancing the maze experience
- Integrate additional interactive features for added excitement
- Present the design to you for feedback
- Iterate based on your input
- Provide final technical designs for implementation

Phase 3: Implementation



During the Implementation Phase, we stand ready to provide support, facilitating smooth execution and addressing any unforeseen challenges that may arise.

During the Implementation Phase, we will:

- Remain on-hand for implementation support, liaising with your project managers and suppliers as required
- Address unexpected late-stage design revisions, arising from structural or other issues, ensuring project continuity
- Offer go-live support, including media and press assistance, such as press appearances, to maximize project exposure and success

STANDARD

Maze Features

- ✓ Small to medium mazes
- ✓ Standard maze features

Creative Services

- ✓ AFD bespoke maze design
- ✓ Up to 2 hours time with Adrian Fisher
- ✓ Up to 1 design iteration
- ✓ Up to 3 hours implementation support

Other

- No changes to concept, plot, materials, functional design
- No site visits
- No press/media support or appearances
- Scoping subject to retainer

PREMIUM

Maze Features

- ✓ Medium to large mazes
- ✓ Premium maze features

Creative Services

- ✓ AFD bespoke maze design
- ✓ Up to 4 hours time with Adrian Fisher
- ✓ Up to 3 design iterations
- ✓ Up to 6 hours implementation support

Other

- Changes to concept, plot, materials, functional design subject to fee
- One site visit
- Limited press or media support
- Scoping subject to retainer

PRESTIGE

Maze Features

- ✓ Large or statement mazes
- ✓ Prestige & custom maze features

Creative Services

- ✓ AFD bespoke maze design, exclusively designed by Adrian Fisher
- ✓ Up to 8 hours time with Adrian Fisher
- ✓ Up to 6 design iterations
- ✓ Up to 12 hours implementation support

Other

- Changes to concept, plot, materials, functional design subject to fee
- Multiple site visits (per availability)
- Press or media support and appearances on request
- Scoping subject to retainer



Getting started

1. Indicate high level vision, budget and desired package
2. Execute retainer letter and deposit funds
3. Phase 1: Scoping commences

DEFINED USE OF DOCUMENTS

Documents prepared by Adrian Fisher Design Ltd. as part of a Proposal, Quotation, Feasibility Study or Assessment are for such purposes only. They may not be used for any other purpose without the written consent of Adrian Fisher Design Ltd.

INTELLECTUAL PROPERTY

This document and the design concepts it contains remain the intellectual property of Adrian Fisher Design Ltd., by whom copyright is reserved.

It is issued on the basis of use by One Client on One Site; its use (including the Concepts it contains) may not be transferred to any other Client, Supplier or Contractor, or used on another Location, without our written agreement.

It is issued on the condition that it is not copied, reproduced, retained or disclosed to any unauthorized person, either wholly or in part, without our consent in writing.

Continued discussion of this and subsequent documentation denotes acceptance of the terms of our intellectual property.

All adaptations of Adrian Fisher Design Ltd.'s copyright materials and design rights remain in English law with Adrian Fisher Design Ltd., including the re-drawing of such materials in other computer file formats (AutoCAD, etc.) as detailed designs for fabrication purposes.

ADRIAN FISHER DESIGN LTD.

The Maze House, Durweston
Dorset, DT11 0QA, UK
www.adrianfisherdesign.com
info@adrianfisherdesign.com

Adrian Fisher Design

Blenheim Palace, UK

CASE STUDY

Blenheim Palace, UK

Blenheim Palace, a UNESCO World Heritage site, was given to the First Duke of Marlborough in recognition of his military victories at Blenheim, Malplaquet, Oudenard, and Ramillies during the Marlborough Wars of 1704 - 1709. The palace was later the birthplace of Winston Churchill, Britain's greatest wartime leader of the twentieth century.

Seeking to enhance its family appeal, Blenheim Palace revitalized its expansive walled garden, located half a mile from the palace, by creating the Marlborough Maze, a feature designed to attract and engage visitors.

- ✓ Historic UNESCO World Heritage site
- ✓ Inspired by historic Panoply of Victory
- ✓ Boosted visitor numbers significantly
- ✓ Featured in media and UK £5 note



CASE STUDY

Creative Brief

The Duke of Marlborough and his staff sought to broaden the family appeal for visitors.

The gigantic walled garden, located half a mile from the palace, was identified as the new focal point, with a hedge maze at one end of the garden to create an engaging attraction.

The maze needed to fit seamlessly into the historical context of Blenheim Palace, reflecting its rich heritage and storied past.



CASE STUDY

Our Creative Response

In response to the brief, we designed a captivating hedge maze that harmonizes with the historical and natural beauty of Blenheim Palace.

The inspiration for the Marlborough Maze came from the stone sculptures depicting the Panoply of Victory, carved by Grinling Gibbons for the roof of Blenheim Palace.

Seen from above, the lines of the yew hedges portray a cannon firing, pyramids of cannonballs, and the air filled with banners, flags, and the sound of trumpets.

The maze was planned to be both challenging and aesthetically pleasing, offering a unique and interactive experience for visitors of all ages.



Adrian Fisher

CASE STUDY

Impact

The Marlborough Maze opened in 1991, perfectly timed with the Duke of Marlborough's patronage of the "1991, The Year of the Maze" tourism campaign, which celebrated 300 years of the hedge maze at Hampton Court Palace.

Since its opening, the Marlborough Maze has played a major role in increasing visitor numbers at Blenheim Palace, a trend sustained over 30+ years.

The maze frequently captures the public imagination, whether featured in the media or part of the maze design appearing on the British £5 note in homage to Sir Winston Churchill.

The Marlborough Maze demonstrates the powerful impact of a well-designed maze in transforming a historic site into a dynamic, family-friendly destination, ensuring its place in both the hearts and minds of visitors for years to come.





Adrian Fisher Design

Cheju Island, South Korea

CASE STUDY

Cheju Island, South Korea

Professor Fred Dustin, an American teaching management at a university on Cheju Island, aimed to create a maze as a tourism project.

This initiative was not only a practical application of his principles but also intended to boost local tourism.

The chosen site for the maze was the lower foothills of the island's principal volcano, where permission was granted for its construction.

- ✓ First maze on Cheju Island, 1997
- ✓ Cultural symbols include serpents, horses
- ✓ Features skywalks, observatory, panoramas



CASE STUDY

Creative Brief

Professor Dustin sought a hedge maze that was both commercially viable and respectful of the natural volcanic setting. He envisioned a maze that incorporated significant cultural and historical elements of Cheju Island.

The site was publicly owned, allowing only a leasehold basis, but this did not deter Professor Dustin. His goal was to create a maze that resonated with the island's heritage and could handle a high volume of visitors.



CASE STUDY

Our Creative Response

Our design team took inspiration from the rich cultural history of Cheju Island, incorporating seven symbolic images into the maze. These included:

- A serpent, which was an object of worship on the island until the mid-70s.
- Native horses brought to the island by Mongolians in 1276.
- The ship Sparrowhawk, shipwrecked in 1653, bringing Hendrick Hamel and his company of Dutch sailors to the Joseon Kingdom.

The maze itself is shaped like Cheju Island. The design includes three skywalks and an observatory, providing panoramic views of the entire maze and popular photo spots for tourists. Visitors can navigate the maze in four different ways from the entrance, with varying levels of difficulty.



Adrian Fisher



CASE STUDY

Impact

The maze opened in 1997 as the first of its kind on Cheju Island. It was an immediate commercial success and has maintained its popularity for over 25 years.

While other hedge mazes have since been developed on the island, this maze remains the original and the benchmark by which all others are compared.

"During all these years in Korea, building the maze was really a very smart thing to do - but the smartest thing I ever did was to be lucky enough to have had Adrian Fisher design the maze for me! Many local families return, weekend after weekend; and visitors from the mainland, especially honeymooners, advise their friends of 'that interesting and clever maze'. Everyone seems to get their kicks out of their 15-20 minute visit."

Fred Dustin, Owner, Cheju Island Maze, South Korea



Adrian Fisher

Adrian Fisher Design

Leeds Castle, UK

CASE STUDY

Leeds Castle, UK

Leeds Castle, described by historian Lord Conway as “the loveliest castle in the world,” is set on two lake islands in Kent, England.

It evolved from a wooden fortress built by a ninth-century thane named Ledian to a royal residence for several Queens of England, starting with Queen Eleanor, wife of Edward I.

This historic site sought to expand its appeal and accommodate more visitors with a creative and engaging addition to its grounds.

- ✓ Landmark in English gardening
- ✓ Unique underground grotto and exit tunnel
- ✓ Helped double visitor numbers



CASE STUDY

Creative Brief

In 1984, Leeds Castle was capable of receiving much higher numbers of visitors, except for the limited capacity within the actual castle.

The plan was to add further activities within the grounds to appeal to a wider public and to handle higher visitor numbers. The hedge maze was the cornerstone of this plan.



Adrian Fisher

CASE STUDY

Our Creative Response

The maze, designed as a topiary castle with castellated yew hedges, features an entrance bridge and a central tower. The top part of the maze depicts a Queen's crown, honoring Leeds Castle's history with three queens of England. The lower half represents a communion chalice, commemorating the daily mass sung for King Edward I's soul for one hundred years.

Inside, the central raised goal offers views of these symbols. Unique to Leeds Castle Maze is its hidden underground exit tunnel, the world's first public hedge maze with this feature. Beneath the stone tower, an underground grotto adorned with seashells, statues, and cascading water leads through a 90-foot passage to a flooded cave, culminating in a return to the surface.



CASE STUDY

Impact

The hedge maze was the centerpiece of a substantial capital investment that also included a new aviary, the Culpeper Gardens, and a new pavilion.

Opened in 1988, this investment successfully doubled annual visitor numbers from 300,000 to over 600,000. For the past 35+ years, the maze has played a significant role in maintaining these increased visitor numbers.

The Leeds Castle Maze, with its Grotto and Tunnel, has become a landmark in English gardening. This maze remains in a class of its own, continuing to captivate and endear itself to visitors for over three decades.



Adrian Fisher





Adrian Fisher Design

Sigurtà Gardens, Italy

CASE STUDY

Sigurtà Gardens, Italy

Located in Northern Italy and framed by the majestic Castello Scaligero, Parco Giardino Sigurtà is celebrated as "the most beautiful 60 hectares in the world."

Since its public opening in 1978, it has captivated visitors with its expansive botanical and naturalistic splendors, including panoramic promenades, lush lawns, eighteen ponds, and remarkable views.

- ✓ Set in historical landscaped gardens
- ✓ Design reflects Italian Renaissance style
- ✓ Helped win prestigious international awards



CASE STUDY

Creative Brief

Count Giuseppe Inga Sigurtà envisioned a traditional maze that would mirror the Italian Renaissance's classical style.

His aspiration was to integrate a maze that not only complemented the existing landscape but also resonated with the Renaissance era's emphasis on symmetry and order.

The design was intended to be a labyrinth of concentric circles within a square, echoing the Renaissance's love for geometric harmony and precision.



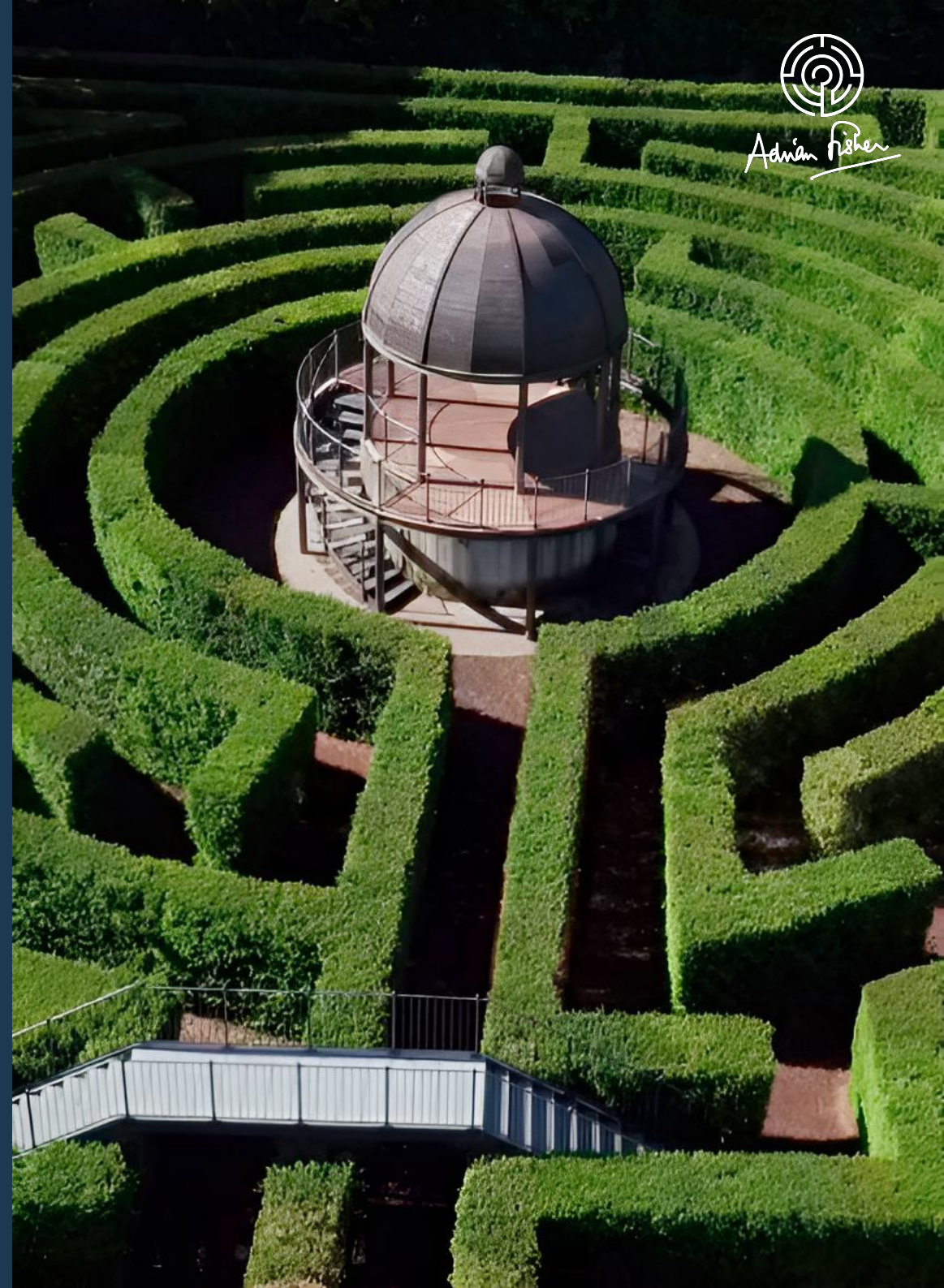
CASE STUDY

Our Creative Response

The maze, designed by Count Giuseppe Inga Sigurtà in collaboration with Adrian Fisher Design, the most esteemed international maze designer, was realized in 2011. Named Il Labirinto (“The Labyrinth”), it spans 2,500 square meters and incorporates 1,500 yew plants.

The design integrates concentric circles within a square, resonating with the classical style of the Italian Renaissance.

The site for Il Labirinto was carefully chosen on top of a ridge, with a sloping path leading down to a valley on one side, enhancing the maze's visual and interactive experience. A tower, inspired by the ones in Paris's Bois de Boulogne, stands at the center, allowing visitors to overlook the maze and the scenic Water Gardens.



Adrian Fisher

CASE STUDY

Impact

Il Labirinto quickly became a signature attraction within the gardens, attracting a wide audience and enhancing the site's cultural and historical appeal.

It was instrumental in Sigurtà Gardens being recognized as Italy's Most Beautiful Park in 2013 and the Second Most Beautiful Park in Europe in 2015. Additionally, Sigurtà Gardens was announced as one of twelve *Gardens of the World Worth Travelling For in 2024* at the International Garden Tourism Awards 2023.

The maze not only enhances the garden's aesthetic and cultural appeal but also solidifies its standing as a must-visit destination.



Adrian Fisher



Explore

About

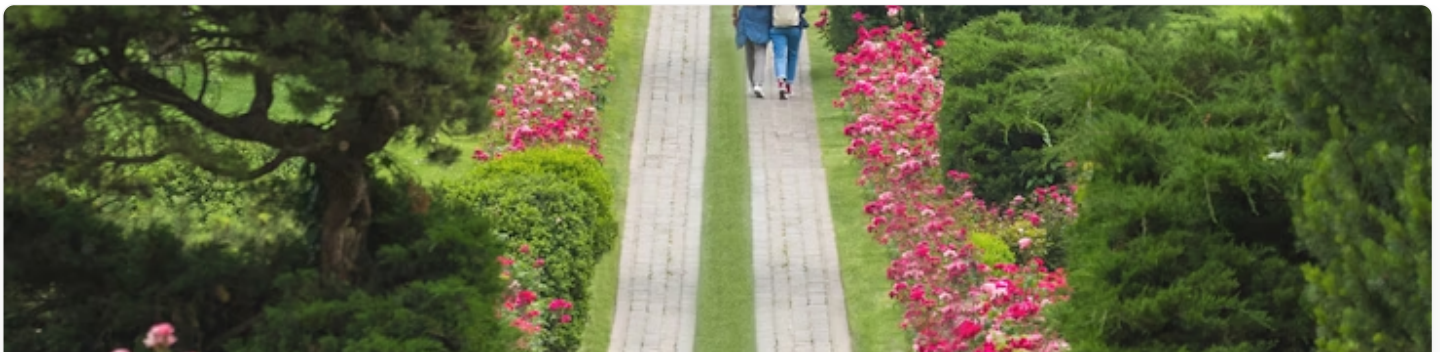
Verona Attractions

Visit The Most Beautiful Park in Italy | Parco Sigurtà

[Verona](#) > [Sigurta Park](#) > [Plan Your Visit](#)

Owned by the Sigurtà family, **Parco Sigurtà** proudly carries the title of the most beautiful park in Italy. It is the perfect escape for those looking to spend a day surrounded by nature. Here you can walk through the stunning landscaped gardens, or have a picnic near the impeccably maintained lawns and lakes. To make the most of your time there, you need to plan ahead. Here's everything you need to know about visiting Parco Sigurtà.

Parco Sigurtà Visitor Information at a Glance



- **What are the Parco Sigurtà opening hours?**

Gardaland Theme Park is open from March to November, from 9 AM - 6 PM

- **Where is Parco Sigurtà located?**

Gardaland Theme Park is located at Via Cavour, 1, 37067 Valeggio sul Mincio VR, Italy. [Get directions.](#)

Contents » [best time to visit Parco Sigurtà?](#)

The best time to visit is during the summer when the weather is fine.

- How many visitors does Parco Sigurtà see per year?

Parco Sigurtà hosts over 1.5 million visitors annually.

Book Tickets to Parco Sigurtà

Parco Giardino Sigurtà Tickets

Extended Validity Instant Confirmation

Mobile Ticket

8 hr.

[More details >](#)

from

€16

[Check availability](#)

Combo (Save 5%): Gardaland Park + Parco Giardino Sigurtà Tickets

Extended Validity Instant Confirmation

Mobile Ticket

Flexible Duration

[More details >](#)

from

€60.80

[Check availability](#)

Combo (Save 10%): Parco Cavour + Parco Giardino Sigurtà Tickets

Instant Confirmation Mobile Ticket

Flexible Duration

[More details >](#)

from

€35.91

[Check availability](#)

Combo (Save 10%): Parco Giardino Sigurtà + 24-Hour Verona Hop-on Hop-off Bus Tickets

Instant Confirmation Mobile Ticket

Flexible Duration

Audio Guide

[More details >](#)

from

€36.90

[Check availability](#)

Opening Hours

Parco Sigurtà is open from 6 March to 13 November 2022.

April to September: 9 AM - 7 PM (last admission at 6 PM)

March, October, and November: 9 AM - 6 PM (last admission at 5 PM)

Last Entry: 1 hour before closing.

[Contents >>](#)

Parco Sigurtà is closed to the public between mid-November and April each year.

[Know More >](#)

[Contents >>](#)

[Contents »](#)

Quick Links

Things To Do In Verona

[Contents »](#)



GET HELP 24/7

- Chat with Us
- Call Us
- Email Us

HEADOUT

- Company Details
- Privacy Policy
- Terms of Usage

WE ACCEPT



© Headout Inc, 82 Nassau St #60351 New York, NY 10038

Headout is an authorized and trusted partner of the venue, offering curated experiences to enjoy this attraction. This is not the venue's website.

[Contents >>](#)

Adrian Fisher Design

The Jewel at Changi, Singapore

CASE STUDY

The Jewel at Changi, Singapore

“The Jewel” at the heart of Singapore International Airport is a visionary project by Architect Moshe Safdie. Featuring the world’s largest indoor waterfall, The Jewel spans 100,000 square meters of floors and decks across five levels, rising 30 meters high. This architectural marvel seamlessly blends nature and urban life, creating a vibrant hub for travelers, visitors, and residents.

At its core lies Singapore’s largest hedge maze, designed by Adrian Fisher Design Ltd., adding a lush, green element that enhances the natural ambiance of this innovative space.

- ✓ World’s first indoor hedge maze
- ✓ Singapore’s largest hedge maze, 1.8m high
- ✓ Enhances Jewel’s blend of nature and urban life



CASE STUDY

Creative Brief

Architect Moshe Safdie is renowned for creating unique spaces that defy convention. His vision for The Jewel was to echo Singapore's reputation as 'The City in the Garden' by combining the essence of being in nature with the vibrancy of a bustling marketplace. This innovative approach aimed to transform the airport into an urban center that engages travelers, visitors, and residents alike.

The upper area of The Jewel is characterized by luxuriant vegetation and a garden-like ambiance. The Canopy Deck, just beneath the glass dome, was designated for two mazes: a hedge maze and a mirror maze. Adrian Fisher Design was tasked with creating memorable and engaging mazes that would keep visitors and travelers returning. Our challenge was to craft the world's first indoor hedge maze, ensuring that the natural ambiance seamlessly blended into the airport experience.



CASE STUDY

Our Creative Response

The Hedge Maze introduces a vibrant green element, with hidden paths and puzzle-solving fun. As the world's first indoor hedge maze, it required careful planning for light, irrigation, and drainage.

Custom soil troughs were designed to support lush vegetation, mimicking natural rainfall for irrigation and integrating effective drainage. The maze's layout maximizes exploration with winding paths, hidden nooks, and surprising turns. Decorative gates and the circular viewpoint offer stunning perspectives, reinforcing the tropical environment.

Our innovative design ensures the maze seamlessly blends into The Jewel's garden-like ambiance, creating a unique and engaging experience for visitors.



CASE STUDY

Impact

The hedge maze is one of the unique and idiosyncratic aspects of The Jewel, which opened in 2019. As Singapore's largest hedge maze, with a hedge height of 1.8 meters (5'11"), it has attracted numerous visitors, including notable luminaries such as Prince William. The Hedge Maze at The Jewel has helped Singapore International Airport frequently be voted the finest in the world.

The Jewel has become a popular leisure destination in its own right for residents of Singapore as well as for airline passengers. The Hedge Maze plays a vital social role, offering an engaging activity for individuals, families, and groups. With no age limits, the maze invites everyone to join in the fun, promoting social interaction and mental stimulation.

The Hedge Maze at The Jewel exemplifies how thoughtfully designed spaces can enrich the visitor experience and enhance a location's appeal.



The Jeju Weekly

SUBSCRIBE NOW

Search The Jeju Weekly

Updated 2022.5.11 12:33

- News
- Travel
- Art&Culture
- Community
- Lifestyle
- About

Mobile Web

Travel Things To Do

'If money is going to be made here, it stays here,' says maze founder

Kimnyoung Maze Park is almost 20 years old and founder Fred Dustin has never stopped giving back to the local community

Darren Southcott | editor@jejuweekly.com

The Jeju Weekly 36,865 followers

Follow Page Cont



승인 2014.07.22 14:43:03



▲ Kimnyoung Maze Park founder, Fred Dustin, believes that it is important to give business profits back to the community. Photo by Darren Southcott

When asked why he donates so much of Kimnyoung Maze Park profits to charity, Fred Dustin replies: "You're supposed to."

Dustin, who has lived in Korea since the 1950s and moved to Jeju in 1971, began work on the maze in 1987 before opening its doors in 1995. The maze, designed by world-renowned maze designer Adrian Fisher, will attract its 5-millionth visitor next year.

The maze is consistently rated as one of Jeju Island's top tourist attractions and up to 15 percent of its profits are plowed back into the community, something Dustin sees as unremarkable.

"It never really occurred to me not to do it. Plus, you get a little bit more value for your money by giving it away," he says. The park's marketing director, Lucas Kim, says visitors to the park are none-the-wiser: "We try to tell them, but they don't care. They just want a good time."

60 Second Travel



Breathtaking views of Mongolian Olle

Issue Popular News

- Collect Marine Debris and Receive [Hot Photo Zone] This Summer, Take '1st International Academic Seminar in Autumn in Jeju with Hotels "UNESCO Heritage Tourism"
- Fourth COVID-19 Vaccinations
- Join Us for Eco-tourism That Reduces Jeju Tourism Meets the World Through Jeju Holds Friendship Week with Sugar Cane Cultivated at Jeju-based

Jeju-Asia's No.1 for Cruise



'The best thing about my job is getting to meet



Achieving dreams through ICCT



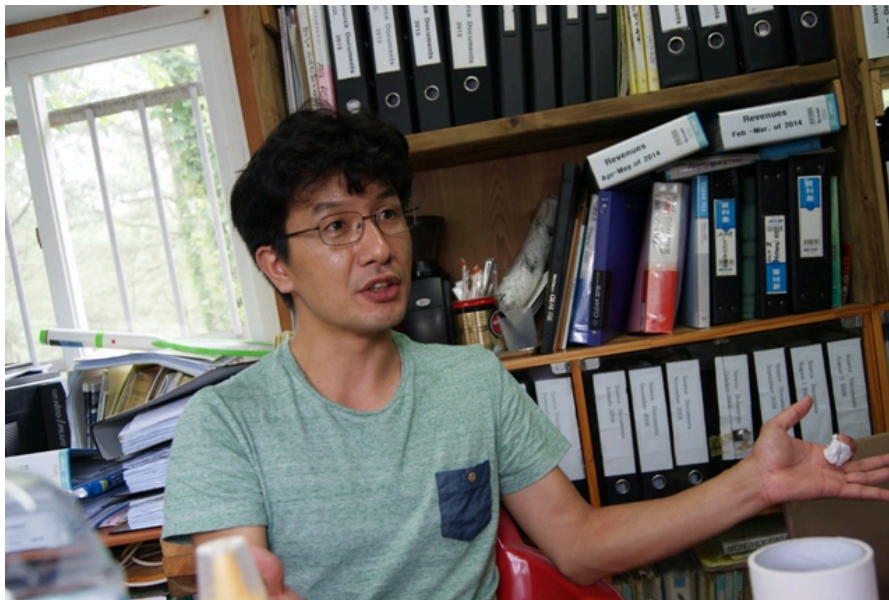
2017 Jeju Cruise Forum celebrates 5th

The Jeju Weekly 36K followers

Follow Page

The Jeju Weekly on Thursday

Nangpoon is a term used to describe the Jeju traditional country style of dining.



▲ The park's marketing director, Lucas Kim, says that visitors are largely unaware of their philanthropy efforts. Photo by Darren Southcott

Causes supported include up to 60 million won to Jeju National University, 10 million won to a local senior citizens' school, and 7 million won to local elementary and middle schools. It also currently runs a summer night program which allows Jeju National University students to gain crucial hands-on experience. Kim says the program sprang from a lack of interest among JNU tourism students in entering the industry.

"I asked the students — all seniors — how many wanted to work in tourism. Only five of them put their hands up," he says, most of the others having been put off by low pay and poor work conditions. The maze pays well and aims to show that tourism is about "putting a smile on people's faces."

"Tourism is actually very charming; I want students to know its good side. So I said, okay we will pay well — twice what they earned before — and they can do all the work, from marketing to sales, even facilities. They learn everything about this company and the process of the tourism industry," says Kim.

Making customers smile is thus a key mission of the six students who manage the operation from ice cream and ticket sales to accounting. While there is no fast track to working at the park itself, a current manager, Moon Daewook, is an alumnus. "Yes, he's a damn good example," says Dustin.

For the night tours, solar-powered lighting, LED lamps and glow-in-the-dark tape are used and candle lanterns are given to visitors to help navigate the maze. The night scenes are especially attractive for romantic couples, says Kim.

Students volunteer for the project through their respective departments and are then selected through interview. Although there is scope for talented students to excel, it is mostly hard graft for young adults with little work experience.



▲ A caricature of Frederic Dustin, with a couple of his many cats. Image courtesy Kimnyoung Maze Park

"Everywhere doesn't operate like we do here, but at least they know that every place needs a system in operation, and they can look for that," says Kim. "We give them a basic manual, but the rest they should learn themselves. How to sell more coffee, more ice creams."

Dustin's park was one of the early wave of tourism-targeted attractions on the island, which now number in the hundreds. He would like to see more of his community-based approach.

"If money is going to be made here, it stays here. Development should be for the people."



▲ A map of Kimnyoung Maze Park

Kimnyoung Maze Park

122, Manjanggul-gil, Gujwa-eup, Jeju-si

*July 17 to Aug. 24, nighttime entry between 7 p.m. and 9:30 p.m.

Summer hours: 8:30 a.m. to 10 p.m.

Contact: +82-64-782-9266 / jejumaze.com / facebook.com/jejumaze

Entrance fee: Adults 3,300 won / Youths, Seniors 2,200 won / Children 1,100 won (500 won discount for Jeju residents / Free for Gujwa-eup residents and the handicapped)

Buses: Jeju Intercity Bus Terminal -#700 / takes 50 mins to Manjanggul Cave Entrance -> change to #900 / takes 3 mins to Kimnyoung Maze Park

Seogwipo Intercity Bus Terminal - #700 / takes 60 mins to Manjanggul Cave Entrance -> change to #900 / takes 3 mins to Kimnyoung Maze Park



Like Share Sign Up to see what your friends like.

▶ Darren Southcott의 다른기사 보기

© Jeju Weekly 2009 (<http://www.jejuweekly.com>)

All materials on this site are protected under the Korean Copyright Law and may not be reproduced, distributed, transmitted, displayed, published without the prior consent of Jeju Weekly.



0 comments

Sort by **Oldest**

Add a comment...

Facebook Comments Plugin

[About the paper](#) [Contact Us](#) [Advertising](#) [FAQ](#) [Privacy Policy](#) [youth protection policy](#) [E-mail address privacy](#) [Sitemap](#)

Mail to editor@jejuweekly.com | Phone: +82-64-724-7776 Fax: +82-64-724-7796

#505 jeju Venture Maru Bldg, 217 Jungangro (do-2 dong), Jeju-si, Korea, 690-827

Registration Number: Jeju Da 01093 | Date of Registration: November 20, 2008 | Publisher: Hee Tak Ko | Youth policy: Hee Tak Ko

Copyright © 2009 All materials on this site are protected under the Korean Copyright Law and may not be reproduced, distributed, transmitted, displayed, published without the prior consent of jeju weekly.com.

POWERED BY **NCS**



Adrian Fisher Design

Three Lands Point, Netherlands

CASE STUDY

Three Lands Point, Netherlands

Three Lands Point is a unique location where the borders of Germany, Belgium, and the Netherlands converge. It is also the highest point in the Netherlands, standing at 322 meters above sea level.

This popular beauty spot in the Dutch forests attracts over a million visitors each year. The project aimed to enhance this natural landmark while emphasizing sustainability.

- ✓ Largest hedge maze in Netherlands
- ✓ Promotes nature, health, and fitness
- ✓ Features unique Foaming Fountain Gates



CASE STUDY

Creative Brief

We were tasked with creating a distinctive maze that would captivate the million visitors each year while maintaining sustainability as a core value.

The land would remain in public ownership, and any structures had to be removable at the end of the lease.

The natural beauty of the area was not to be compromised, and the project should promote nature, health, fitness, and well-being.

The maze needed to be a wholesome outdoor activity using living materials to attract families and encourage public fitness on the maze and woodland trails.



CASE STUDY

Our Creative Response

The maze design embraces the theme of "three" to reflect the convergence of three countries. The maze features a three-pointed design with heraldic images of the Dutch Lion, German Eagle, and Belgian Lion facing their respective countries. It includes three bridges with raised viewing decks, creating a three-dimensional puzzle.

Innovatively, the maze incorporates nine Foaming Fountain Gates that rise and fall, adding a fourth dimension—Time—to the puzzle.

The goal is a magnificent central tower, which was built in 2023 to replace the original tower, installed when the maze was opened in 1991.



CASE STUDY

Impact

The Three Lands Point Maze is the largest hedge maze in the Netherlands and consistently the most popular. In its first season, it attracted 125,000 visitors, maintaining between 110,000 and 125,000 ever since.

This project demonstrates how an enterprise on public land can be a resounding success, benefiting both visitors and the environment. Continued investment reflects confidence in the site's long-term viability, while the option to revert the area to public open space remains.

The Three Lands Point Maze is a testament to the successful integration of sustainability and public enjoyment in a natural setting.



Oakfuskee Adventure Amenities



Proposal for a
Canopy Walk
& Adventure
Playground

Prepared By:

**Beanstalk
Builders**

March 5, 2024

Beanstalk Builders

Our Mission Statement

At Beanstalk Builders, we strive to give people outdoor adventures with positive experiences, to foster an appreciation for the environment, to provide on-going injections of self-esteem, development of physical and mental fitness, and revitalization of the human spirit. In other words – to make the world a better place through outdoor adventures.

It is a very simple formula: When people feel good about themselves, they relate to others and the environment in a more positive way, thereby creating a powerful multiplier effect for spreading goodness. Sound corny? Just watch the glow radiating from people who accomplish something unusual or challenging like conquering a climbing tower.

At Beanstalk Builders, we try to achieve personal growth opportunities in all our designs. Of course, crossing a wilderness footbridge provides a different experience than climbing to the top of a Beanstalk Climbing Tower. But with a custom-designed, picturesque, and intriguing footbridge, people feel a difference on the other side of that simple trek. In other words, no matter the project, every Beanstalk build is designed to create a new outlook for each participant, while bringing success to our clients.



Beanstalk Team



Mike Fischesser

- ▶ Mike is the founder and principal designer for Beanstalk Builders. He is a former Program Director for North Carolina Outward Bound School, and former Director of the National Training Institute and National Coordinator for Programs and Safety for Outward Bound USA. From 1989-99, he was founder and owner of Alpine Towers Inc., one of the most accomplished challenge course companies in the world. Renowned for his outdoor leadership skills, Mike is founder and executive director of The American Adventure Service Corps (TAASC). Outward Bound USA awarded Mike the 2015 Kurt Hahn Award, which recognizes outstanding service and leadership. As it relates to safety, Mike was the brainchild and founder of what is now known as the Association for Challenge Course Technology (ACCT). Mike is a true pioneer of the industry and the dreamer behind many of our designs.

mike@beanstalkjourneys.com
828-443-3795



Isaac Hoff

- ▶ Isaac is the Director of Operations at Beanstalk Builders and works closely with clients throughout the design, build, and long after project completion to ensure our client's goals are met and relationships are maintained. With over 20 years of industry experience, Isaac brings a wealth of knowledge to the table.

isaac@beanstalkjourneys.com
828-443-6964



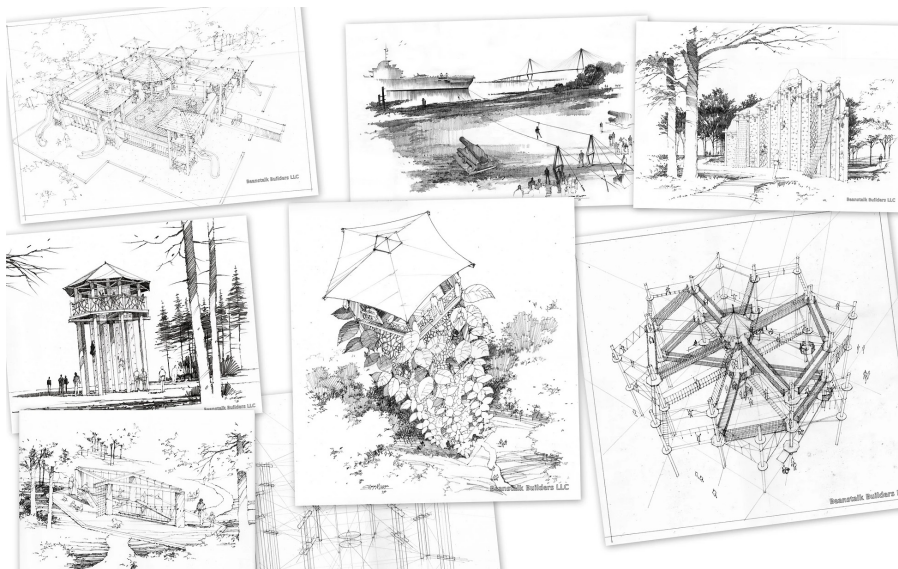
Marcus McCrea

Marcus has been a Project Lead with Beanstalk Builders since 2015. He came to us with years of industry experience and is a true craftsman at his trade. Marcus is a key player in creating designs that turn dreams into realities.

marcus@beanstalkjourneys.com
828-764-7326

Project Approach

- ▶ · *Full-service*- With safety at the forefront from start to finish on all of our designs, we provide a full-service ticket to adventure. We work closely with our clients to design, build, train and certify staff, and annually inspect our builds. We remain available to our clients after the build for all needed questions or support.
- ▶ · *Custom*- Beanstalk Builders specializes in custom designs. Many amazing designs have come from simply listening to what the client wants and needs. After assessing the site and resources, a creative collaboration of engineering, craftsmen, arborists, and years of experience always produce something spectacular, that we then can turn into reality. We are excited to work with you from start to finish to develop a custom design that best highlights the land and achieves the goals for the park.
- ▶ · *Natural Based Play*- We believe that creating an environment that mirrors a natural environment is the best way to engage the imagination and creativity of a child. For us, our focus is to simulate natural environments. The trees, the forest, the earth. In this way, we believe we are enabling children to appreciate nature and learn about their environment in a really fun way. Another area of focus for us is to create environments that enable problem solving. Traditional playgrounds often have a clear/direct path and or method to move through. As we design, we think to how a child might use their imagination in traversing a bendy log bridge or how the child might navigate a netted slack line to get to the top of the tree house. But the greatest reason, is the simplest reason, to inspire more play. Research has shown that natural play structures more than double the amount of playtime a child experiences when compared to traditional play structures. Play is so critical to childhood development.



Project Approach

Black Locust Log Construction

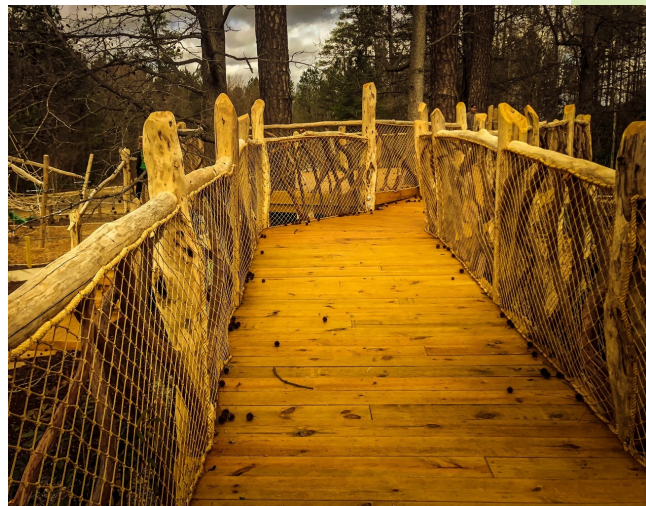
Beanstalk Builders proposes black locust log construction for this build. This will not only add to the aesthetics of the course, it will decrease maintenance needs, and increase the overall life of the structure.

Locust harvested in the mountains versus the lowlands/fields are one of the longest lasting wood products available. This is due to the slow growth rate in the harsh mountain conditions (visible by the close grow rings).

“Black Locust (*Robinia Pseudoacacia*) is the strongest and most rot resistant wood indigenous to North America. It makes an incredibly resilient and durable decking material that will remain beautiful and withstand years of outdoor exposure.

Nothing beats Black Locust for sustainability and durability. The wood is naturally rot-, decay-, mildew-, and insect-resistant – the perfect choice for outdoor projects in all climates.

Building with Black Locust is also a sound environmental choice. Black Locust grows faster than any other known hardwood tree. Unlike Brazilian Ipe, Black Locust does not contribute to tropical deforestation. Black Locust is also known as false acacia, or Chinese teak (due to its resemblance to teak).” Reference Robidecking.com



Project Highlights

Everyone's Adventure Playground

- Adventure Tower 8'
 - Byron's Maze
 - Climbing Wall 8'
 - Slides
 - Zeke Bridge
- Swing Set
 - 2 Swings
- Sky Hammock 16'
- Bouldering Forest
- Stump walk
- Poured Rubber Surfacing
- 25'x25' Pavilion

Canopy Walk

- 1,500 ft of suspension bridges, longest canopy walk in the country
- Partially ADA accessible design
- 16 Lookout tower platforms



Canopy Walk Sample Photos



Playground Elements



Adventure Tower



Zeke Bridge



Byron's Maze

Playground Elements



Swing Set



Sky Hammock



Climbing Wall

Playground Elements



Pavilion



Bouldering Forest

Budget & Timeline

Our Design Process

We work closely with our clients to develop custom designs that fit their vision, goals and work well with the natural landscape. Our design process includes:

- Site visit and concept overview meeting with client to confirm overall direction and goals for playground.
- Concept presentation and review with client of the top view and layout of design.
- Design presentation and review with client of overall playground design, elevations, and label of play elements.

Design Phase Budget: \$40,000

Build Phase

Jobs are scheduled per order of receipt of signed agreement and first deposit at a date agreed upon by both parties. Below is a schedule outline of the project timeline:

- Phase 1: Award of contract
- Phase 2: Payment of first draw, scheduling of start date
- Phase 3: Ordering of materials and supplies
- Phase 4: Break Ground
- Phase 5: Installation of course
- Phase 6: Punch list and final adjustments
- Phase 7: Commencement inspection and final walkthrough with Client
- Phase 8: Enjoyment for All

Time frame is approximate, subject to change pending weather setbacks, installation challenges (i.e., rock problems with hole drilling), etc.

Beanstalk Builders will strive to follow this timeline to the best of their ability.

Playground Build Phase Budget: \$1,000,000

Canopy Walk Build Phase Rough Order of Magnitude: \$3,700,000

pending final design & engineering requirements

**Due to the everchanging market, pricing provided in this proposal expires 6 months after the date listed above. Please reach out for updated pricing information*

Projects Within Scope

McGalliard Falls Suspension Bridge Valdese, North Carolina

[Video Tour](#)



Projects Within Scope

EMS Family Playground

Cherokee, North Carolina

<https://www.beanstalkbuilders.com/cherokeeplayground>



Projects Within Scope

Harris YMCA Playground

Charlotte, North Carolina

<https://www.beanstalkbuilders.com/harrismca>





North Haven Campground, Bonners Ferry, Id



**Handcrafted Luxury Conestoga® Wagons,
Flexible Turnkey Shower Houses,
and Cabins**

Wagons + Shower Houses + Cabins = Glamping Resort

Handcrafted in Idaho USA • conestogawagonco.com

INTRODUCING CONESTOGA® CABINS!



IN A VARIETY
OF SIZES AND
STYLES!

Conestoga® Cabins

Get a taste of true tranquility with our new cabins, offered in a variety of styles. These cozy havens bring a touch of rustic charm to your property, offering guests a private but genuine countryside escape.

Styles and Sizes

Designed with flexibility in mind, our Cabins come in various sizes, catering to your property needs. Whether you want to provide a tranquil couple's retreat or a spacious family getaway, these cabins will redefine your guest's stay!



CONESTOGA® CABINS

Conestoga® Cabins

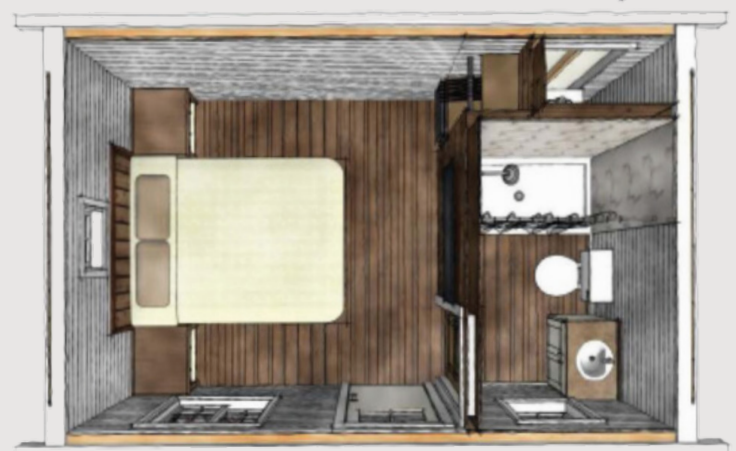
Durability Meets Comfort

Crafted with a robust full-metal frame to ensure durability and longevity, all while boasting an aesthetic exterior that your guests will love.

Plus, with RV-style hookups identical to our popular shower houses, seamless integration into your property's amenities is a given. Give the gift of a unique glamping experience while redefining relaxation on your property!

Features include:

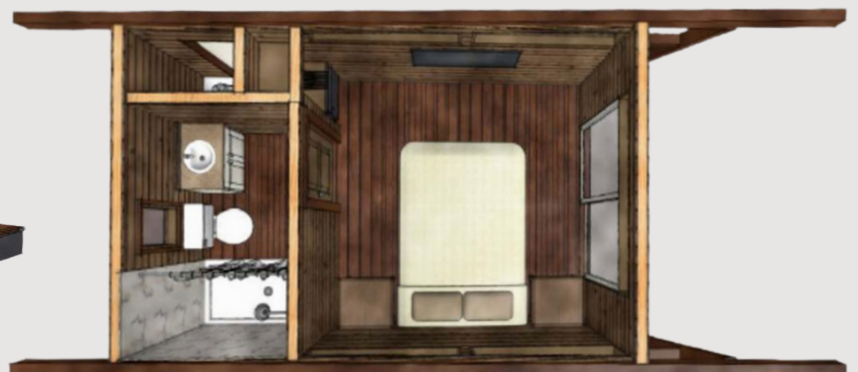
- ⊗ Full Metal Framing
- ⊗ ANSI Code Compliant
- ⊗ RV Hookups
- ⊗ Style and Sizing Options
- ⊗ Available With or Without Bathroom
- ⊗ Easily Transported By Forklift



COASTAL W/ BATHROOM
10X16



CONESTOGA MODERN
W/ BATHROOM
10X16





Lux Wagon With Bathroom

The spirit of the Wild West, the comforts of a five-star resort, and built to last, our Lux wagon has it all!

How a Bathroom is Built Matters!

We build the bathroom separately and as a fully enclosed and vented shower house pod that is then placed inside the wagon when assembled on your property. This extra effort extends the lifespan of your canvas, protects the wagon from humidity, and shields your guests from unpleasant odors. No compromises are needed with a Conestoga® Lux Wagon!

Features include:

- ⊗ Fully Enclosed Bathroom
- ⊗ Full Sized Shower
- ⊗ AC/Heater
- ⊗ Standard RV Hookups
- ⊗ King Bed and Bunk Beds
- ⊗ Flexible Arrangements Sleeps Up to 6
- ⊗ Extended 34' Length



Wagon will arrive with shower pod separated.

A Fully Enclosed Bathroom & Double Canvas Insulation Protects Your Investment

The bathroom pods are separately built from the wagons and then later placed into the wagon using a forklift. This key detail ensures that they are a fully enclosed unit that will protect the guests from any odors or humidity that may be emitted from the bathroom. We take pride in the build of our products, so that you can too!

Our Conestoga® Wagons are built with a double canopy framing that protects against the elements of the outdoors to ensure your guests' comfort during their stay.



Shower pod is installed into your wagon onsite by our team.



First layer of canvas is stretched across the wagon frame providing extra insulation.



The second layer of vinyl canvas is stretched over the wagon hoops adding an extra layer of protection and making it easy to clean.



NEW COUPLE'S WAGON!

Couple's Lux Wagon With Bathroom

Let the Conestoga Couple's Lux Wagon be the ideal intimate haven for your guest's next anniversary or couples' staycation!

Comfort For The Couple's Getaway!

Nestled on your ranch or resort, this romantic escape is tailor-made for couples seeking a glamping paradise. With a snug queen-sized bed, a handy mini-fridge, a quaint table for two, and a private bathroom, every amenity is crafted for your guest's comfort.

Features include:

- ⊗ Fully Enclosed Bathroom
- ⊗ Queen Bed
- ⊗ Table
- ⊗ Mini Fridge
- ⊗ Full Sized Shower
- ⊗ AC/Heater
- ⊗ Standard RV Hookups





Classic Conestoga® Wagon

This model provides a spacious interior measuring 25 feet long with 180 sq. ft. of floor space and includes a:

- ⊗ king size bed
- ⊗ bunk beds
- ⊗ wagon wheel table

With fully functioning wheels, our Conestoga® Wagon has the appealing ability to be transported and moved around your property with ease.



North Haven Campground, Bonners Ferry, Id




CONESTOGA
Wagon Co.

**ALLOW YOUR
GUESTS TO
EXPERIENCE THE
SPIRIT OF THE WILD
WEST IN COMFORT!**

Multiple Sleeping Configurations

Our Conestoga Wagons have many customizable options to choose from, allowing you to create the perfect clamping experience for your guests. This unique opportunity will provide rental rates that are sure to accelerate your ROI.

WAGON FEATURES:

Our authentic canvas-covered wagons have:

- ⊗ USB charging ports
- ⊗ overhead lights
- ⊗ two side tables
- ⊗ space for a mini-refrigerator and microwave

The Double Hoop Canvas Canopy design provides ample insulation for cold evenings and hot days. AC and Heating come standard.



Bar Wagon

The Conestoga® Bar Wagon draws in guests and creates a unique experience they won't soon forget. Fully portable, this patent-pending wagon is set up for off-the-grid use. The Bar Wagon is the perfect addition to:

- ⊗ Wedding Venues
- ⊗ Glamping Resorts
- ⊗ Dude Ranches
- ⊗ Rodeos
- ⊗ Carnivals

With a flexible format, this wagon can be customized to fit your needs perfectly.

Call us today, and let's create a food and beverage attraction for your property!



IF YOU'RE GOING TO FALL OFF THE WAGON, MAKE IT A CONESTOGA!



North Haven Campground, Bonners Ferry, Id

**ELIMINATE THE
NEED FOR ON-SITE
CONTRACTORS!**

Turnkey Premier Shower Houses

The 'Turnkey' Shower House Building offers an efficient way to quickly add toilet and shower facilities to your property. Ready to hook up to your existing infrastructure, these buildings eliminate the need for on-site contractors.

The 8' x 16' floor plan can be configured as two units, each with a shower and toilet, three shower units or three toilet rooms.

Creative opportunities for this floor plan include offices, snack shacks or laundry rooms! With easy transportation, easy utility hookups, and an optimized layout, this floor plan can provide your property with any amenity you might need!





Western
Model

3 Room Shower Houses

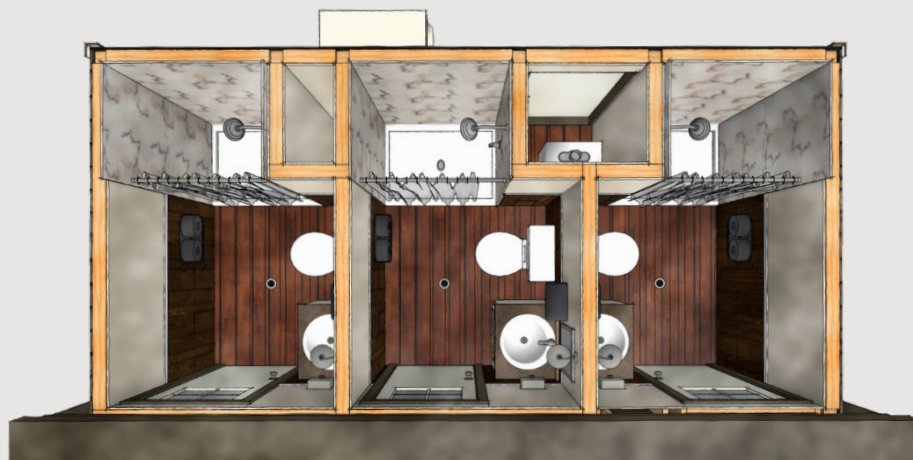
Western and Basic

Shower House Styles New!

Multiple unique styles to choose from, each tailored to cater to your guests' needs, whether it's two bathrooms or three. Give your guests the comfort they deserve and elevate your property's hospitality with one of our new shower houses!



Basic



Floor Plan



Modern Model

2 Room Shower Houses

Modern, Coastal, Conestoga

Features Include:

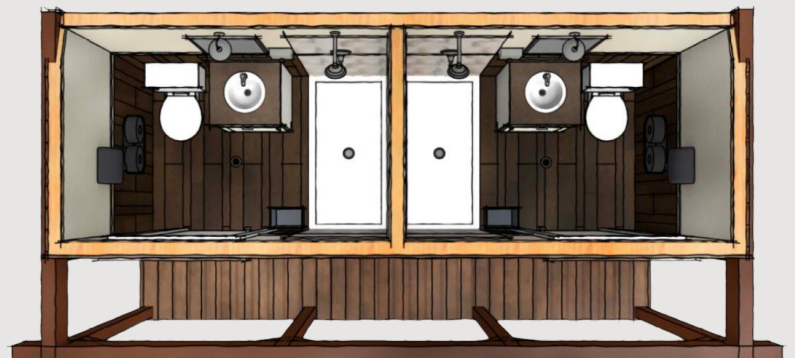
- ⊗ Full Metal Framing
- ⊗ ANSI Code Compliant
- ⊗ RV Hookups
- ⊗ Style and Sizing Options
- ⊗ Available With 2 or 3 Bathrooms
- ⊗ Easily Transported By Forklift



Conestoga



Coastal



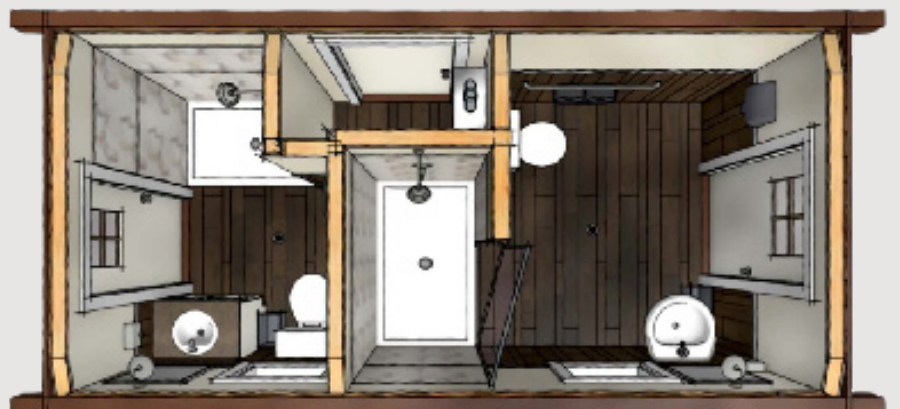
Floor Plan



ADA-Compliant Shower House

This model is configured with one ADA-compliant shower room and one standard shower room.

Both ADA-compliant and Standard Shower Houses have on-demand water heaters and options for AC/Heating.





Shower House Delivery and Setup

Our shower houses are built on steel frames for easy transportation to your property and are ready to hook up to your existing utilities. They are delivered via flatbed truck and can be quickly set in place with a large forklift.



Wagon Delivery and Setup



North Haven Campground, Bonners Ferry, Id

Delivered and Easily Relocated

Our Conestoga® Wagons are hand-built by our craftsmen right here in the U.S. with easy transportation in mind! Our wagons can be transported via flatbed truck to its new home, your property!

Need to relocate your wagon? Not a problem! Your new wagon can be easily moved with a pickup truck for seasonal storage or to “Circle the Wagons” around a campfire!





WEBSITE



SAGE WESTON
Sales Associate
435-557-9767
Sage@CWagons.com



CONESTOGA
Wagon Co.

JASON OLSON
Managing Partner
307-277-0525
Jason@CWagons.com

VIRTUAL BROCHURE



JESSE STRONG
Sales Associate
801-362-0167
Jesse@CWagons.com

The Conestoga Wagon Co.
46 East 2nd North
PO Box 173, Bloomington, ID 83223

Handcrafted in Idaho USA • conestogawagonco.com

*Custom and Customized Design
Planning a Honka Luxury Log Home
Investing in your family's future with a luxury
custom log home.*



This catalogue is for everyone dreaming of investing in a Honka luxury home that fits their individual dreams and build site. We believe that every client and build site are unique and that the "cookie cutter" design approach is not the correct solution for them to achieve their dream. Therefore, we have developed a process that walks the client through the thought and design stages to help them achieve their goal. We hope you will find a solution that you are looking for on these pages.

*We at Honka are eager to help you create **your** dream!*

Honka Log Homes USA
31955 Castle Court, Suite 3S, Evergreen, Colorado 80439
303-810-7992, 720-341-9103

tom@honkausa.com markiermano@gmail.com

Just RIGHT FOR YOU

So why build a Honka Log Home?

1. **Unlimited design capabilities** – we are not your standard “cookie cutter” supplier where every house looks the same. These are legacy homes and businesses, both large and small, that are designed for a homeowner who insists on the highest quality attainable. Most of our projects are either new custom designs or customized versions of an existing design.
2. **The Beauty of a Honka Log Home** – both on the interior and exterior of the home.
3. **Worldwide Trust and Experience** – Over 65 years of experience in the log home industry with nearly 90,000 installations around the world. Honka is a true industry leader.
4. **Healthier Living Environment** - Log buildings naturally promote good health, thanks to their superior air quality. According to an extensive European study, the more massive wood there is in the interior of a house, the healthier the air quality becomes.
5. **Energy Efficient** - Honka log systems provide a naturally energy-efficient home due to the thermal mass properties and prevention of air infiltration.
6. **A Favorite of Builders** – Any quality builder can build a Honka Log Home. The pre-cut logs are all tagged for location making the log assembly nearly foolproof. The rest of the project is like building any home.
7. **Sustainability and Environmentally Correct** – The factory is powered by 100% renewable energy and one of the greatest things about Finland is its abundance of trees and their forest management since the 1800’s.

*It's more than a house.
It's a healthy home.*

A genuine Honka log house is a warm, inviting, and healthy place to live. It's an ecological home that quite literally takes good care of the people who live within its walls.



Natural materials

Wood has been loved by people through the ages. Using cutting-edge technology, Honka processes the wood into the best possible construction material. Despite the high degree of processing, the dense and healthy log in the wall is still the same tree that has endured snow, rain and snow in a Nordic forest. The feeling you get when you walk through the doors of a log house is unique – warm, cozy and welcoming Natural.

High indoor air quality

According to an extensive European study, the more massive wood there is inside a house the healthier the air quality becomes. Massive wood has the unique ability to absorb moisture and release it back into the air as the room dries. This helps to keep the indoor humidity at an optimal level, where the air is easy to breathe, and the growth of mold and bacteria is minimized. Log buildings promote good health naturally, thanks to their superior air quality.

De-stress living

It has been scientifically proven that solid wood structures lower heart rate and reduce stress like walking in the woods. Solid wood also has excellent acoustic properties, absorbing sounds and creating a calming and cozy atmosphere.

Did you know that massive wood is a surprisingly fireproof material that can endure fire even better than concrete or steel pillars? Wood contains about 15 % of water. Therefore, before wood can catch fire, all water must evaporate. In a fire, a massive wood house will char, but it will not collapse in the same way as light- or steel structured houses.



Honka Fusion™ and the freedom of design

As a natural material, wood changes over the course of time. Our innovation, the non-settling Honka Fusion™ log, allows all the excellent properties of a traditional log house to be incorporated into modern urban living.

Honka Log Home Design and Construction Drawing Process

Entering the process of planning and building a new home can be overwhelming for most of us. “Where do I start?” is a question we hear quite often. This is why we at Honka Log Homes have created a process to help new homeowners through the steps required to achieve their dream home.

Most Honka Log Home projects go through some form of customization or are true custom designs to conform to the exact needs of the client. The first step is to identify how much design expertise will be required to arrive at a plan and architectural style that meets your needs. There are three main areas of home designs that we typically work with clients on.....

- An existing Honka Log Home design that you want to customize.*
- A design you had an architect create or found elsewhere.*
- A completely new custom design that hasn't been created.*

The design process involves a closer understanding of three primary elements....

Design Needs: *rooms, sizes, locations all based on how you will live in the home.*

Land: *views, access, features, topography, space.*

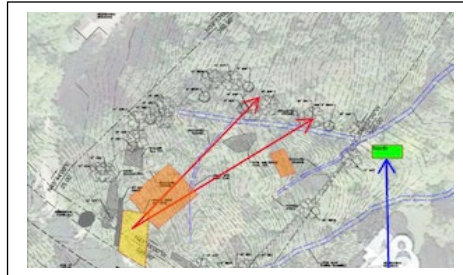
Budget - *what do you want to invest on the project.*

*First, let's start with your land planning.....
Determining how to best utilize your build site.....*



Step 1. Survey site to determine topography, access, building envelope, and foundation needs.

Step 2 Identify view corridors and other key features to maximize the enjoyment of the home location



Step 3 Create the site plan to show access, house location, views, sunlight, etc.

Next, let's decide what type of design is needed....

Custom Designed Home vs Customized Design

There are three categories of custom and customized designs that we typically encounter. They are:

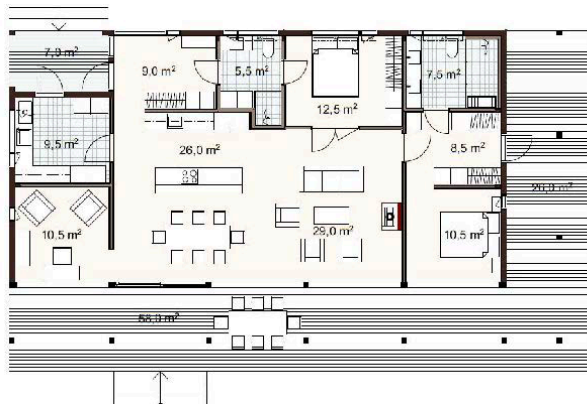
- *Customize an existing Honka Log Home design*
- *Create an entirely new custom home with our design team*
- *Use your own architect to create a new custom design.*

Customizing an existing Honka design.....

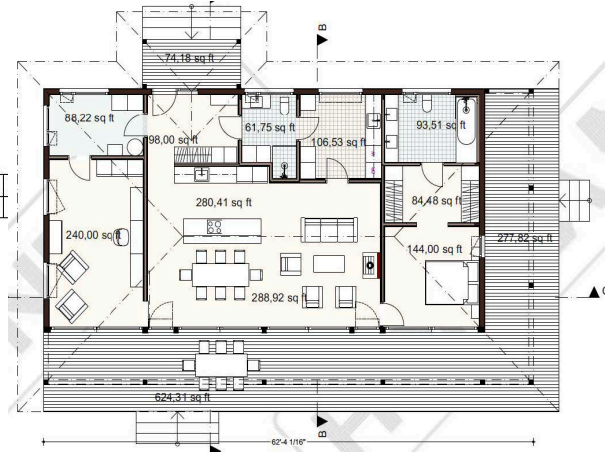
You found a design but want to change a few things about it.....

Customizing an existing Honka design can be as simple as modifying the floor plan. Example: Lux 145 customized to include a master suite and art studio

Before customization



After Customization

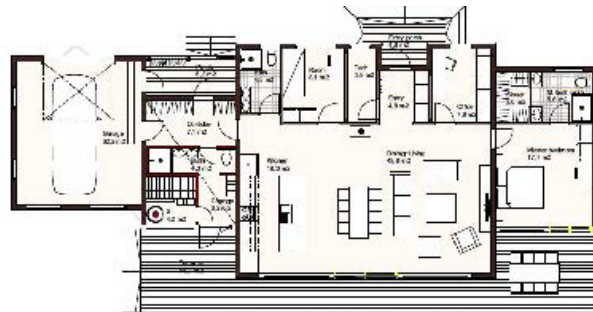


Or as complex as enlarging, adding a garage and modifying the interior layout and exterior look.

Original design



Customized design



The customization process starts with a discussion covering the changes needed to meet the clients' requirements. These changes are submitted to the Honka Log Home factory to get a quote that will cover the

creation of a new set of architectural drawings with dimensioned floor plans and elevations. This set of drawings can then be used as a starting point for developing quotes and the final set of construction drawings.

Designing the Perfect Custom Honka Log Home for YOU

If your project is not a customization of an existing Honka Log Home design but instead involves either creating a new design (which will require an architect) or using a design your architect already created, we recommend starting with the Pre-Design meeting (see below).

Pre-Design Meeting (no charge)

The process is simple and efficient as follows:

- *Discuss client site documents to identify home orientation, solar exposure, access points, view corridors and grade considerations.*
- *Review client design concepts, ideas, wants and needs.*
- *Establish a workable budget that will match size of house, site requirements and local build costs.*
- *Discuss basic programing including number of bedrooms/baths, master suite layout, kitchen layout and other living spaces both indoor and out.*
- *Define what subsequent steps are required and costs that might be incurred.*

The next step(s) to be taken depends on what documents need to be developed to define the design. If the design is pre-determined and simply needs for Honka to create the dimensioned schematic plans, then it may be ready to submit to Honka to get a cost for that step.

If further development of the site plan and/or home layout are required, we then move to the 2D and 3D phases.

We always start at the Plan Level...because that's where you live! The Pre-Design meeting is at no cost and allows you to get to know our design team and understand the process a little better. After that meeting, we will identify the costs for both the 2D and 3D phases of a conceptual design.

You can choose to just start with the 2D phase only so you can determine the value we are bringing to the process. Most clients then opt to fund the 3D phase as well but that is not required should you feel like going a different direction.

At this point we are only exploring the Conceptual Design phase or what architects typically call "Schematic Design". This allows us to establish the basic constraints (ie. site features, access position, solar exposure) which then in turn inform the shape, orientation, connection to grade and traffic flow of the home. Subsequent steps could include: Honka pricing, builder selection and budgeting, creation of engineered drawings, securing building permits, etc.

Discussion Considerations

What creation is needed to serve and enhance how you live and who you are.

Honka Custom designed houses & resorts

Below is an example of a 5,000sf that was custom designed to meet the homeowner's desires.



A Honka designed home is the perfect choice for everyone who wants to feel exclusive and in touch with nature. The main design theme for Honka log homes, log cabins and holiday homes is coziness and functionality — after all, a home is meant to be a haven of relaxation. Whether you dream of a beach house, a rustic log cabin in the woods or a luxurious villa, the charm of natural wood will create a warm and inviting environment where you want to return to again, and again.

Create a design that is your lifestyle.....



Honka Lux



Or choose to customize one of thousands of existing Honka designs ranging from a few hundred square feet to thousands.

Honka Halla



Honka Ailo



Honka Tuuli



Honka Halti



For more examples of existing Honka Log Home floor plans visit us at www.honka.com

Safe dreams with certified structures

The life span of massive wood houses is very long. A wooden building may last for hundreds of years when it has been designed and built correctly to protect it from humidity and extreme weather conditions. Honka has unrivalled expertise based on years of research and testing and supplying over 85,000 log buildings worldwide.

Because Nordic pine grows slowly, its wood is exceptionally hard, particularly the heartwood. Pine can withstand changes in humidity without cracking, which makes it the best possible material for log houses. All the wood used in the production of Honka houses has to pass our strict quality control standards. Only the very best wood sourced from lush, healthy, well-cared-for forests will do.

The quality of everything Honka does is based on generations of knowhow, ongoing development, and independent testing. The results are indisputable. We're proud to say that we make some of the most air-tight, water-tight, fire and earthquake resistant homes on the market. The better the airtightness of the house, the more energy efficient it is. Our precision-machined timber with built-in seals yields very tight-fitting joints, and hence air-tight walls. With improved airtightness, you can enjoy lower energy bills.

Watertightness also plays an important role by keeping wall structures safe from water damage. Honka houses are insulated at the factory with double seals between the logs. This helps keep them well insulated, decreases the possibility of on-site sealing errors and helps accelerate construction. Various country-specific requirements, for example those related to loading and heat insulation, are taken into consideration.

Honka is the first log house manufacturer in the world to gain the right to use the CE certification mark in accordance with ETA (European Technical Approval). The CE mark indicates that a product meets the requirements of the EU's building product directive (one of the most demanding homebuilding requirements in the world).

HONKA LOG HOMES

LUX MODELS



Our latest log villa collection, Lux, is named after light — its modern Scandinavian architecture is based around light. A wall of windows lets in natural light from morning to night. You can see outside as soon as you awake in the master bedroom. Enjoying seasonal changes and the surrounding landscape is child's play in this house. Each and every Lux becomes as unique as each log within it — and each resident.

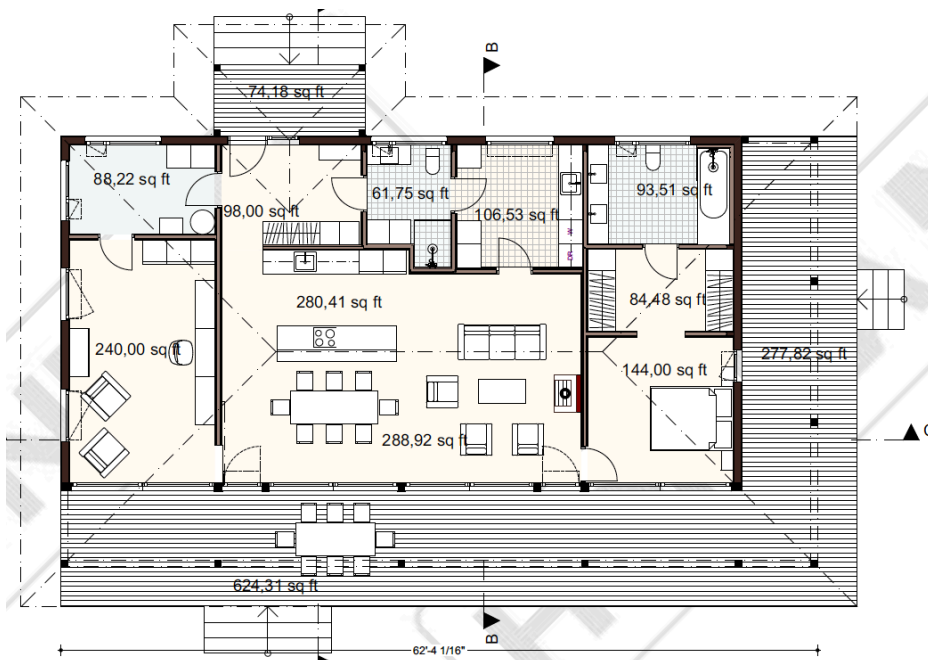
LUX MODELS

CUSTOMIZED SPECIFICALLY FOR THE USA MARKET



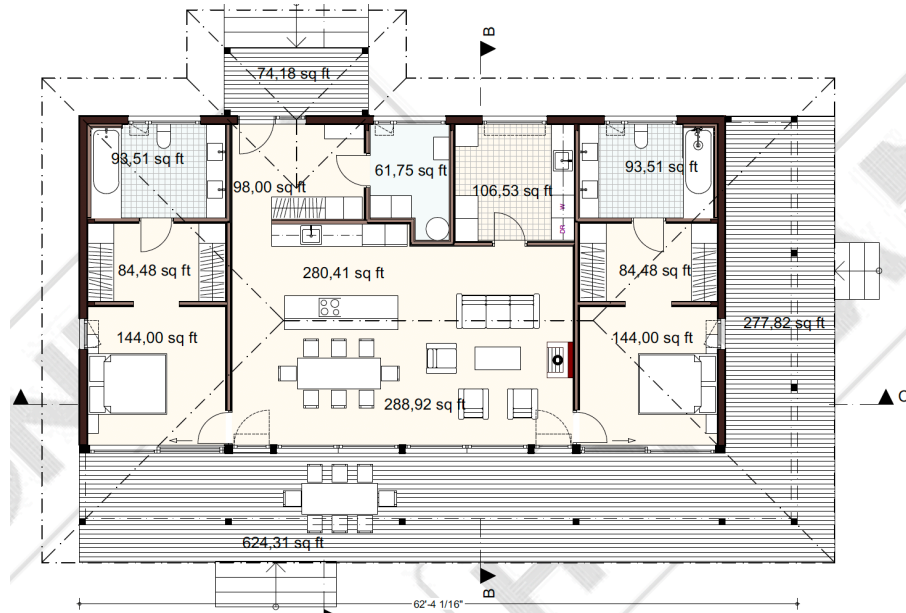
LUX 145 ARTIST DREAM

In addition to the original Lux 145 design, we have created three layouts to meet more traditional USA floor plans. The Artist Dream was designed specifically for an artist and has a master suite on one side of the house and an art room on the other side.



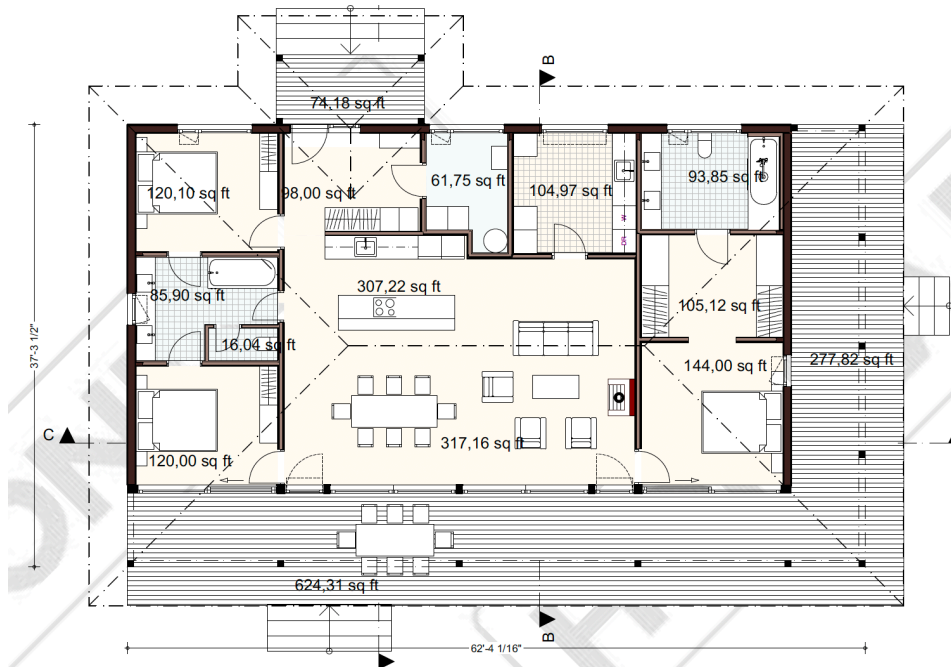
LUX 145 DUAL MASTER SUITES

The Lux 145 Dual Master Suites design was based on what we felt was the perfect vacation home for two couples. This design has a master suite on both ends of the home with an open kitchen and great room in the middle.



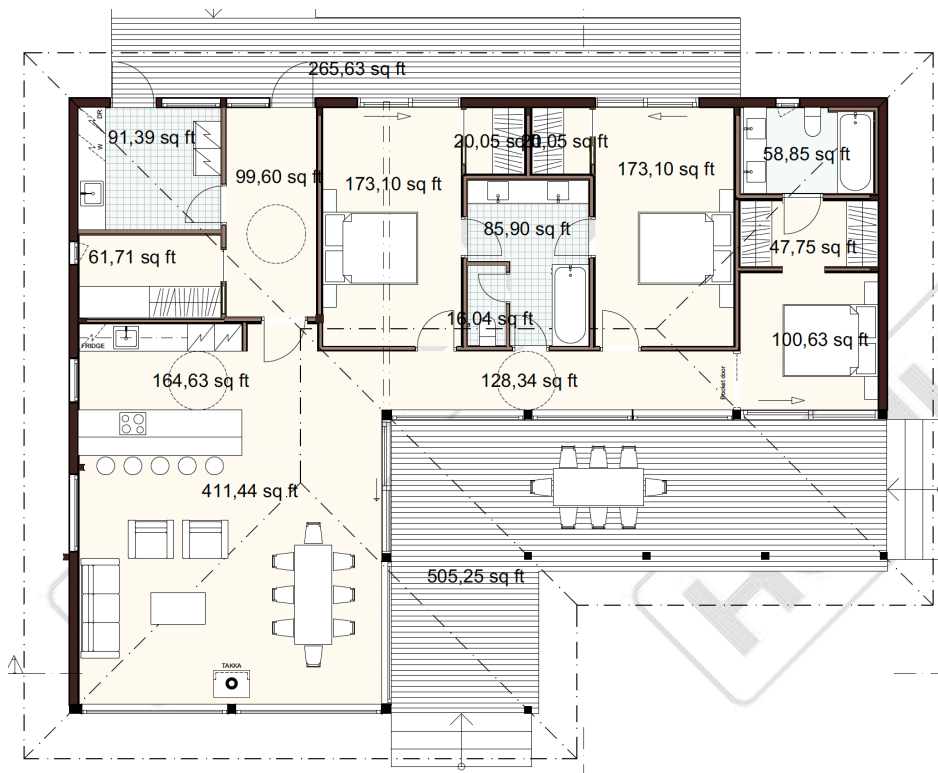
LUX 145 THREE BEDROOM

The Lux 145 Three Bedroom design allows families with children or multiple guests to reside in. This design has a master suite on one end of the home and two bedrooms with a Jack & Jill bathroom for the children or guests. It also has an open kitchen and great room in the middle.



LUX 154 THREE BEDROOM

The Lux 154 Three Bedroom design is slightly larger than the Lux 145 and still includes the master suite and two additional bedrooms with a Jack & Jill bathroom for the children or guests. It also has an open kitchen and great room in the middle.



LUX 208 EXPANDING AND CUSTOMIZING TO MEET YOUR SPACE REQUIREMENTS

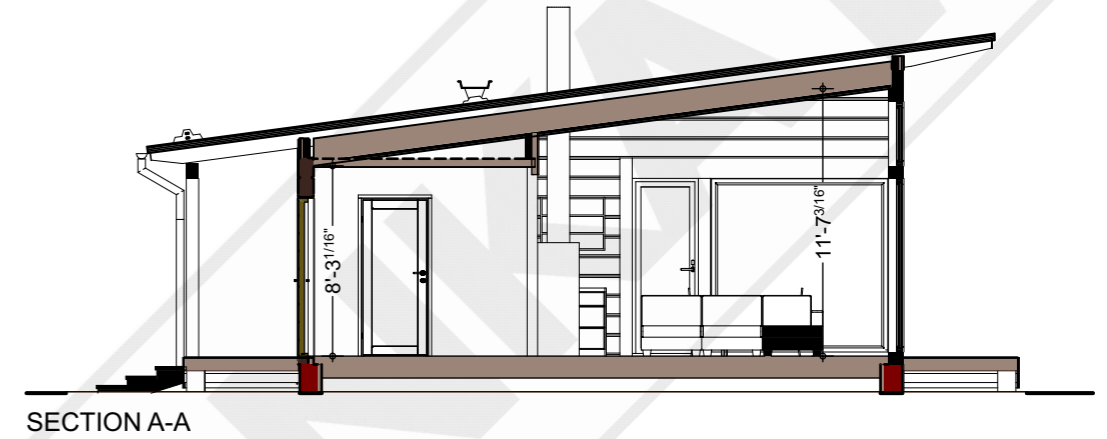
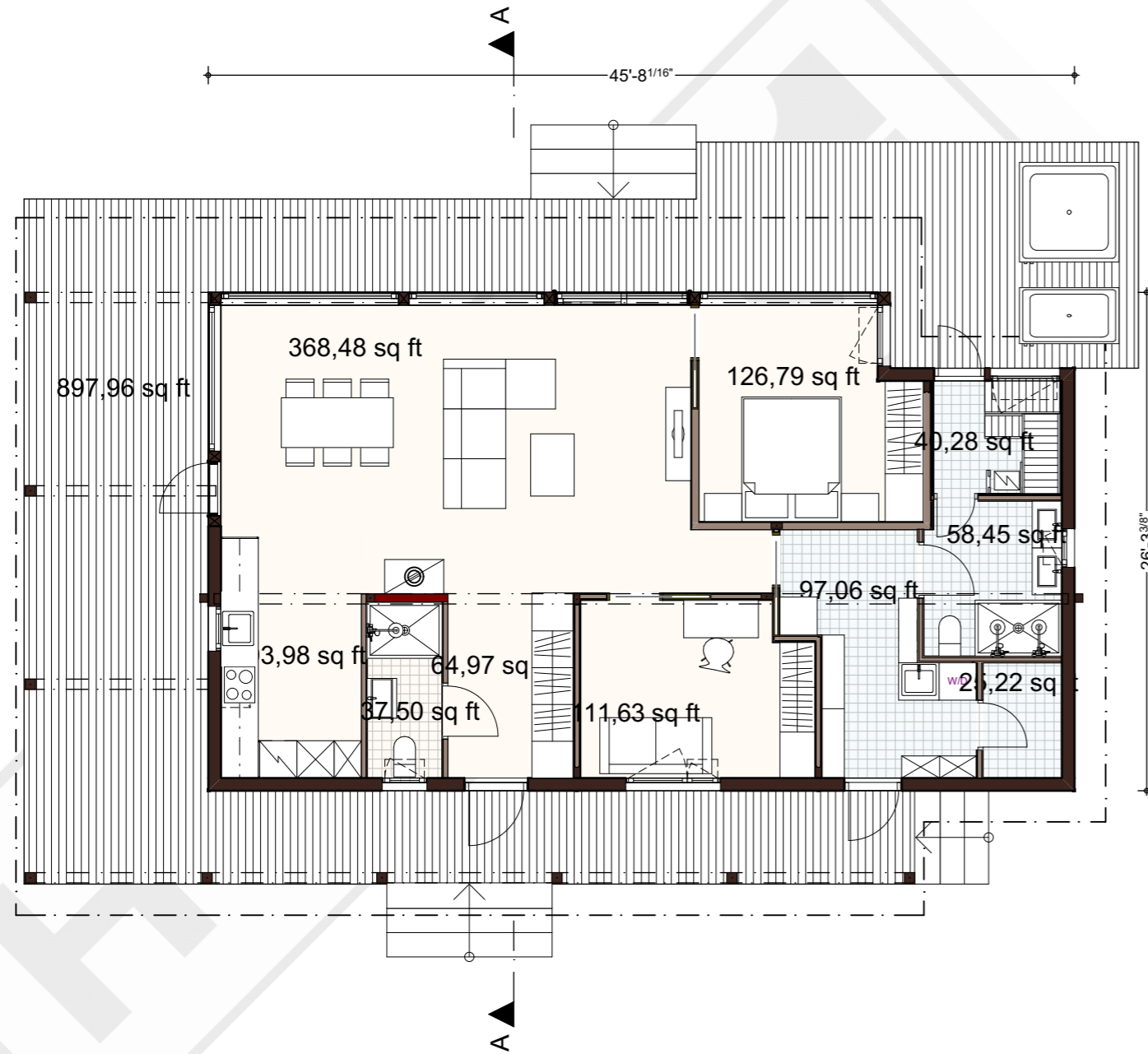
The Lux 208 design demonstrates how the Lux concept can be expanded to meet most any space and layout needs for the homeowner. This concept includes a separate building for a sauna or even a guest suite.



For more information on how to create and build a luxurious Honka Log Home please contact us.

US Log Homes, LLC, 31955 Castle Court, Suite 3S, Evergreen, Colorado 80439

www.honka.com tom@honkausa.com 303-810-7992



KARSTULA FACTORY
HONGANTIE 41, 43500 KARSTULA, FINLAND
TEL. +358 20 575 700 FAX +358 20 575 7210

COPYRIGHT HONKARAKENNE OYJ
DESIGNER

DATE
26.03.2024

Memmu Pitkänen RA (AMK)

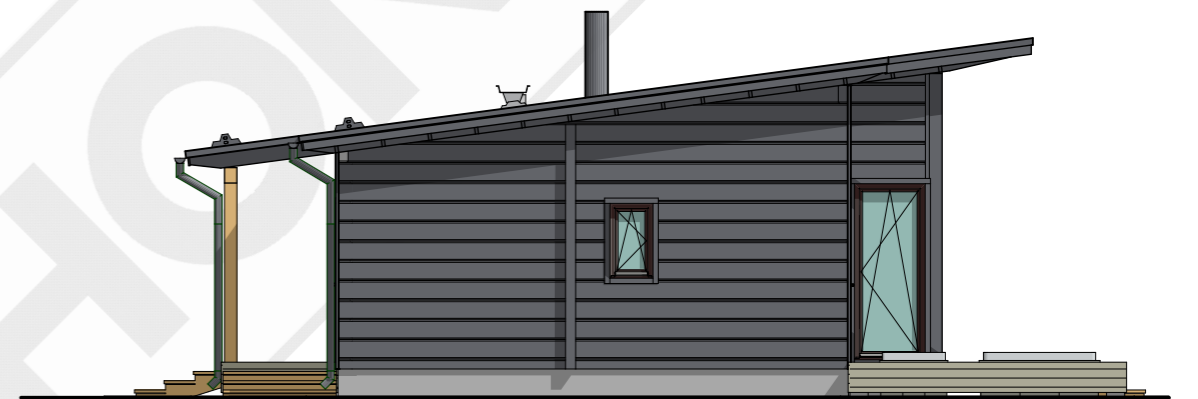
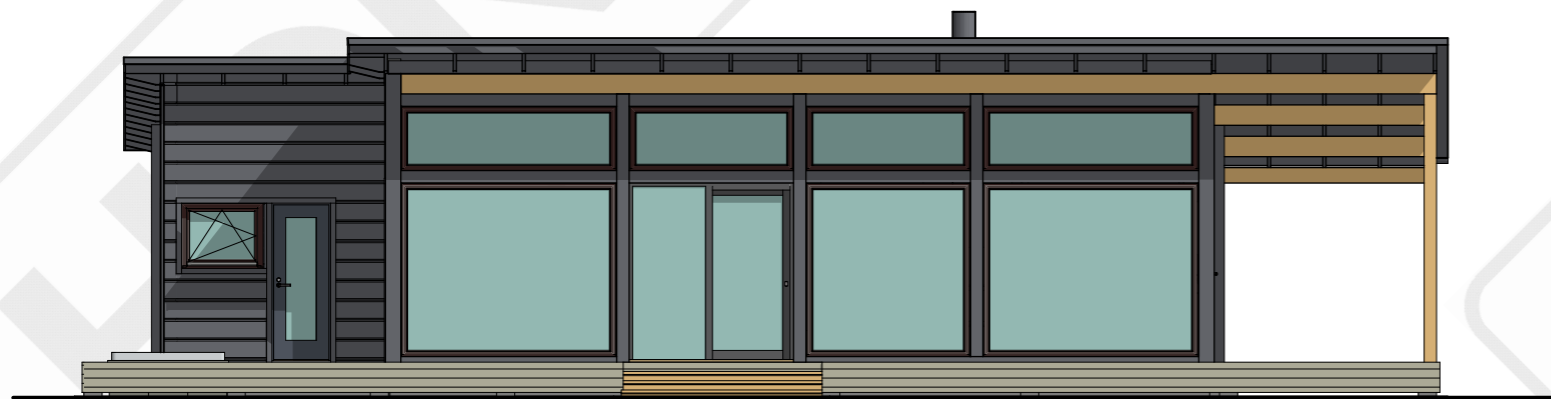
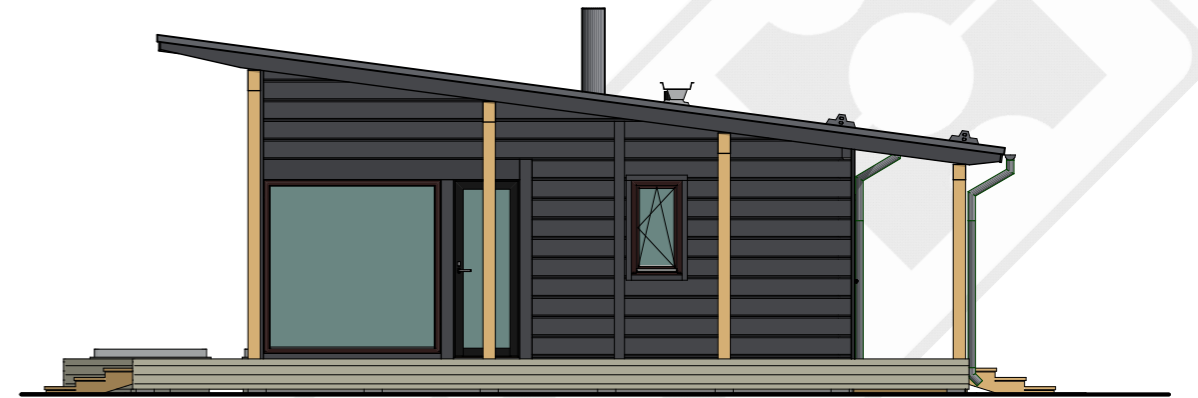
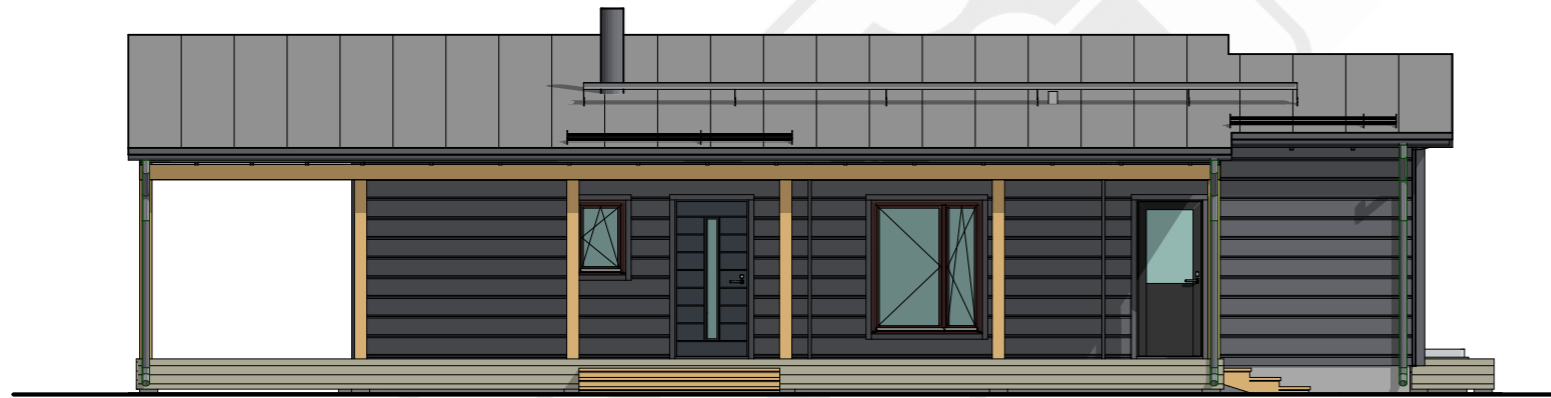
PRELIMINARY DRAWING
HALTI 100 1A CUSICK
LUONNOKSET

SCALE

~1:100

PLAN TYPE OFFER NUMBER CAD NAME DRAWING N.

ARK 0000030 CUSICK_HALTI 100_FXL204NZ.pln **1**



HONKA[®]
 KARSTULAN TEHDAS
 HONGANTIE 41, 43500 KARSTULA
 PUH. 020 575 700 FAX 020 575 7210
 COPYRIGHT HONKARAKENNE OYJ
 SUUNNITTELIJA
 Memmu Pitkänen RA (AMK) PVM
 26.03.2024

LUONNOSPIIRUSTUS	HALTI 100 1A CUSICK		MITTAKAAVA
LUONNOKSET			~1:100
SUUNNITTELUALA	TARJOUSNRO	ATK-NIMI	PIIR. NRO
ARK	0000030	CUSICK_HALTI 100_FXL204NZ.pln	2



KARSTULAN TEHDAS
HONGANTIE 41, 43500 KARSTULA
PUH. 020 575 700 FAX 020 575 7210

COPYRIGHT HONKARAKENNE OYJ
SUUNNITTELUJA

PVM

26.03.2024

Memmu Pitkänen RA (AMK)

LUONNOSPIIRUSTUS
HALTI 100 1A CUSICK
LUONNOKSET

MITTAKAAVA

~1:100

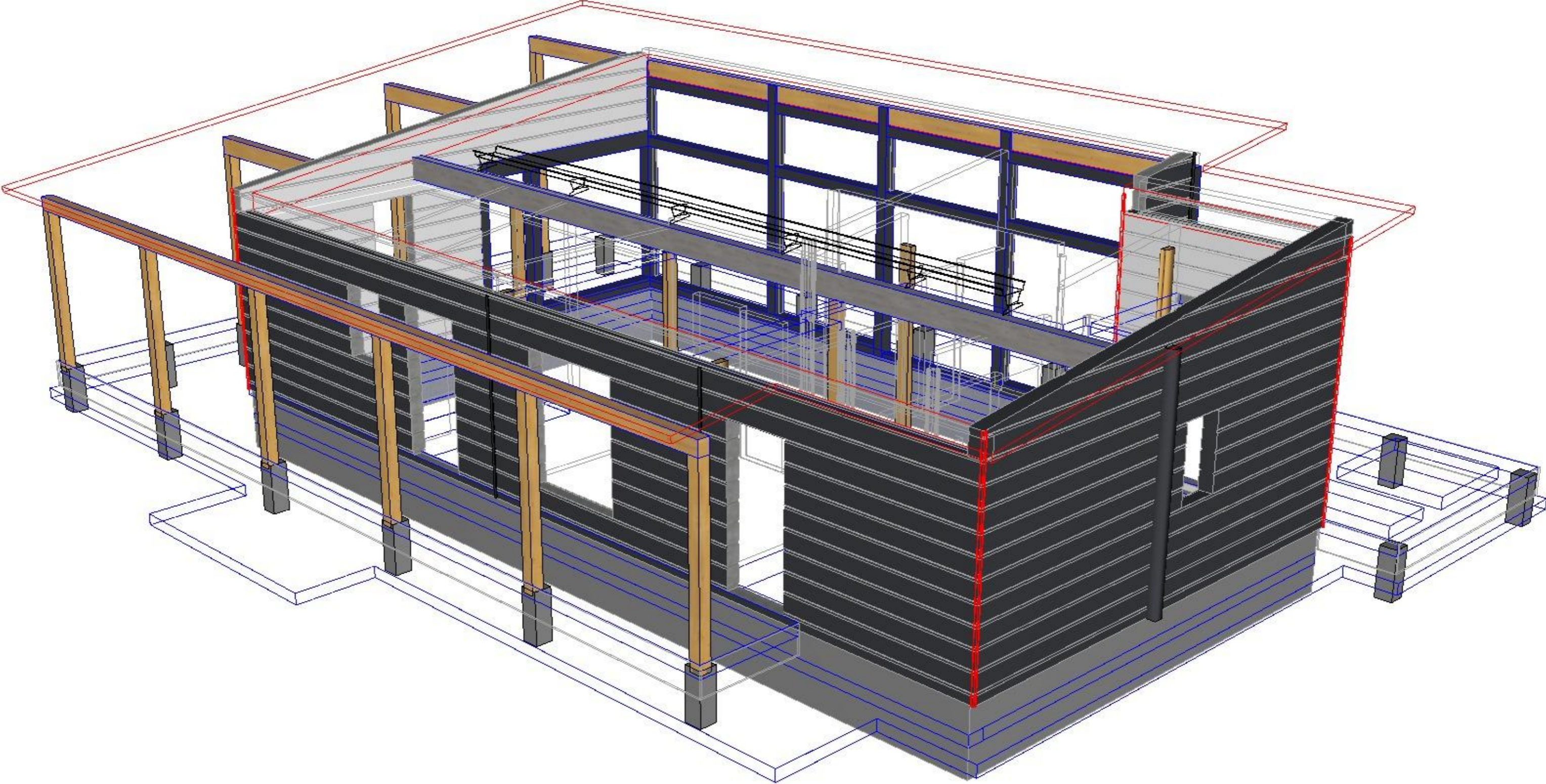
SUUNNITTELUALA TARJOUSNRO ATK-NIMI PIIR. NRO

ARK

0000030

CUSICK_HALTI 100_FXL204NZ.pln

3





TREE TENT

Product Guide



THE WORLD'S GREATEST ESCAPES



TREE TENTS®



“ ABSOLUTELY MAGICAL. A TRIUMPH OF PRECISION ENGINEERING. THE INTERIOR CAPTURES THE ROMANCE AND COSINESS OF A TENT THAT JUST SO HAPPENS TO BE SUSPENDED IN THE AIR.”

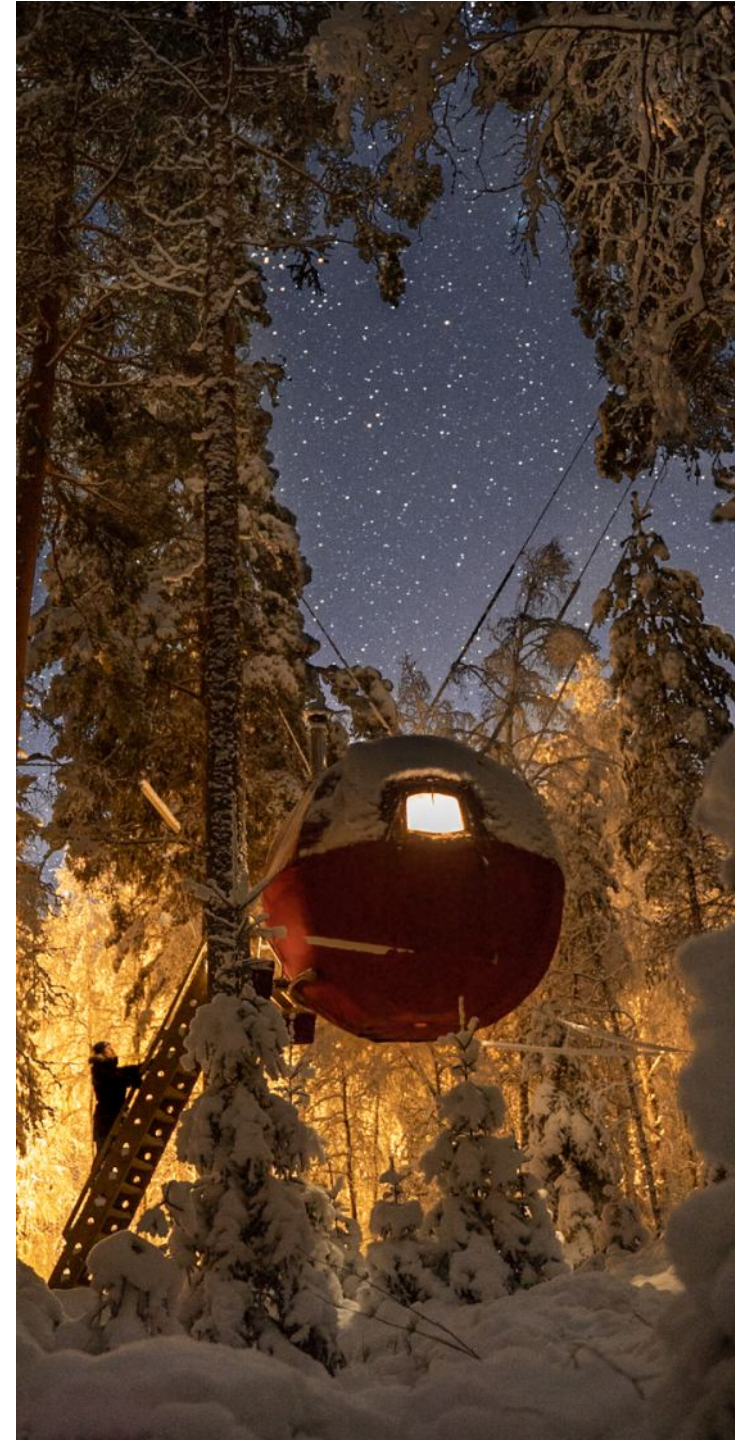
George Clarke
George Clarke's Amazing Spaces
Channel 4

THE TREE TENT

The Tree Tent is a creatively engineered, award-winning and completely unique tree top hideaway, made in Sussex, England.

Combining the precision of aeronautical engineering, the romance of wild camping and the comforts of home the Tree Tent offers the ultimate escape into the outdoors.

With sustainable design innovation at the heart of what we do, we've made sure this one-of-a-kind structure will have a big impact on guests, not on the environment.



ELEVATE YOUR BUSINESS

With demand for glamping holidays reaching new heights and the range of accommodation growing steadily with it, it is critical to make the right choice now to ensure your future success.

Knowing this, we design and create accommodation that will ensure you stand out from the crowd, deliver big and future-proof your investment.



Resilient design

Specialist materials offer hassle-free use and extremely low maintenance while the modular design means sections can be replaced at minimal cost and disruption if damage does occur.



For every season

Superior waterproofing technology, premium quality materials, space age insulation and customised features like micro wood burners mean guests will stay high and dry whatever the weather.



Painless installation

Our low impact approach to installation will see you rise above many planning headaches. Plus, once delivered, your Tree Tent can be installed in around two to three days – weather permitting!



Use your unusable woodland

Foundations? Who needs 'em! A flat surface? Not for us! All we need is two healthy, strong trees to transform even the roughest, toughest woodland.

“TREEHOUSES ARE OUR MOST POPULAR ACCOMMODATION BY FAR. THEY'RE ALWAYS BOOKED WELL IN ADVANCE, HAVE THE HIGHEST AVERAGE RATES AND OCCUPANCY AND RECEIVE BRILLIANT FEEDBACK FROM GUESTS.”

Sawday's Canopy & Stars

FOR THE LOVE OF WOODS

We believe there is nothing like the power of the outdoors to recharge and rejuvenate. We are woodland warriors passionate about sharing authentic experiences and enabling adventure that doesn't cost the earth. Like our own well-being, our woodlands need to be protected and this ethos drives everything we do from strategy to installation.



BETWEEN EVERY TWO PINES IS A DOORWAY TO A NEW WORLD"

John Muir



Knowing where our materials come from ensures they are **responsibly sourced, 100% recyclable and of the highest quality.**



By delivering structures that are prefabricated and flat-packed, **we dramatically reduce their carbon footprint** in production, transport and installation.



Each structure is built by experts in the UK using a **clever modular design** that allows damage to be repaired rather than the entire structure needing to be replaced.



Having reduced our footprint as much as possible, we partner with community projects to fund the **planting of new trees** where they're needed most.

We've got lofty goals so we've partnered with sustainability experts to help us to be the best we can be for our environment.



FIELD TESTED SPECIFICATION

The Tree Tent is constructed using only the highest quality, sustainably sourced materials, which are field tested to ensure they go the distance. On top of this, your new structure will be made bespoke, meaning you get exactly what you want and never pay for features you don't need.

What's included?

- > Engineered marine plywood frame
- > Weather-tight marine fabric outer skin
- > Standard interior liner
- > 2 single beds or 1 double bed
- > Stainless steel rigging & suspension kit
- > Tree survey, health and safety check
- > Uk delivery

We also offer a range of purpose-designed upgrades to help you create your dream tree top escape.



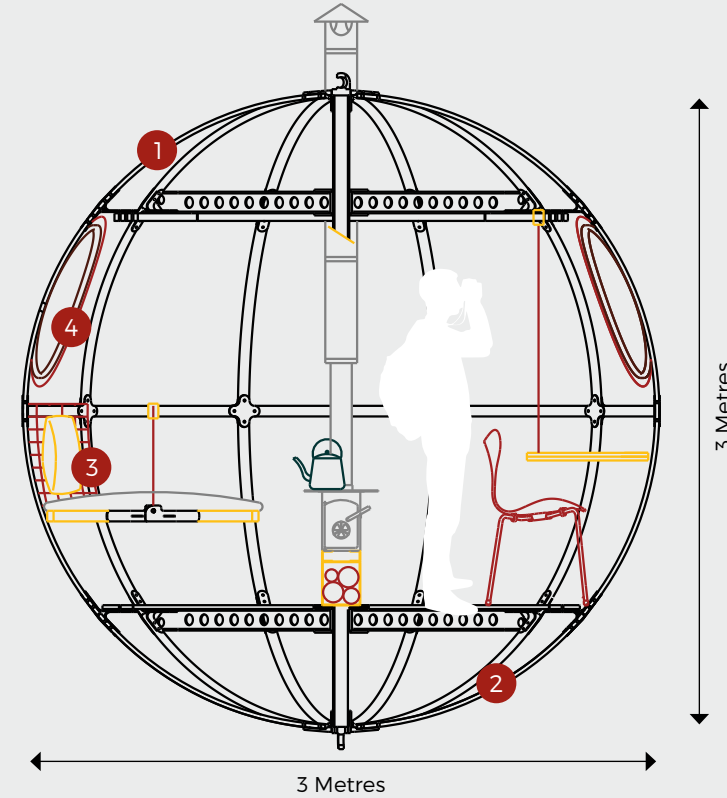
1 Water-tight outer skin

Our experts have thoroughly tested both natural and synthetic fibres and have found an option that is weather-proof, resists rot and is eco-friendly. 100% recyclable, marine grade polyester canvas. Available in a range of colours.



2 Strong structural frame

The lightweight frame is precision engineered from a core of recycled aluminium (with minimum 85% recycled content) and locally manufactured plywood. This balance makes it strong, durable and light, reducing the impact on your trees as well as energy consumed in production and transport.



3 Quality interior liner

Our hand-selected recycled polyester lining comes standard, with options to upgrade to 100% wool lining and multi-foil insulation to keep your Tree Tent extra toasty.



4 Windows, doors and skylight dome

Crystal clear windows with simple zip and roll shutters can be configured in a range of positions to suit your surroundings, while a clear moulded skylight dome offers unlimited canopy gazing opportunities.

- > Ideal for 2 adults + 2 children
- > 100% water / snow / wind proof
- > Draft free
- > Fully insulated
- > Easy to clean
- > Simple winterisation process
- > Flexible interior layout
- > Fully customisable
- > Electric & solar power compatible
- > Eco-friendly + 100% recyclable



Two year guarantee on the main structure



Clever modular system that adapts to your use



Innovative and memorable design



Fully support and comprehensive user guide

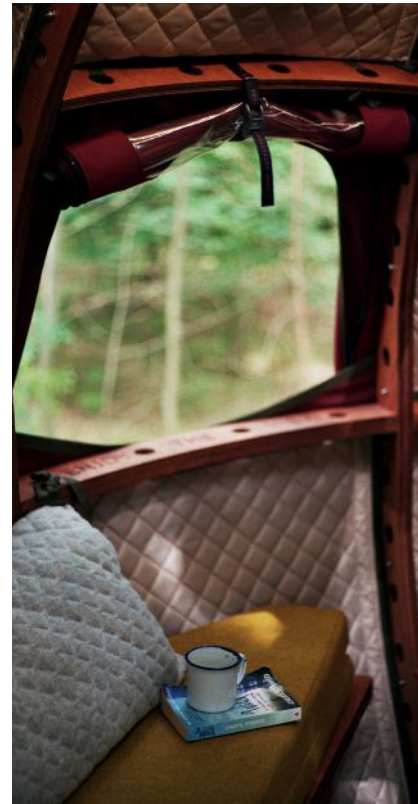
SUPPORT LOCAL!

Our hideaways are created by local experts in our Sussex workshop. Visit us to see your Fuselage come to life and rest easy knowing you are supporting local industry while reducing your carbon footprint!



MAKE IT YOUR OWN

Creating an amazing glamping experience is all about the personal touch. Knowing this, we've designed a range of quality upgrades to help you make the Fuselage your own. After all, every site is different, so your accommodation should be unique too.



UPGRADE OPTIONS

Pick and choose from the list below or work with us to bring your ideas to life.

- > Exterior and interior fabric colours and finishes.
- > Micro wood-fired stove.
- > Secret hide-alls and storage hatches.
- > Lightweight, fold away and swivel tables and seating.
- > Luxurious quilted, wool thermal lining from happy British Sheep.
- > Multi-foil thermal insulation.
- > LED lighting.
- > Number and placement of windows.
- > Sleeping layout including options for singles, doubles and bunk beds.
- > Rechargeable battery pack charging points.
- > Sustainable wool cushion and blanket pack.
- > Protective winter cover.
- > Entrance platform and ladder.
- > Expert installation assistance.



“AN UNPRECEDENTED BLEND OF INNOVATION, CREATIVITY AND UNIQUENESS”

Winner
Innovation Award
2016 & 2018
Farm Business Show

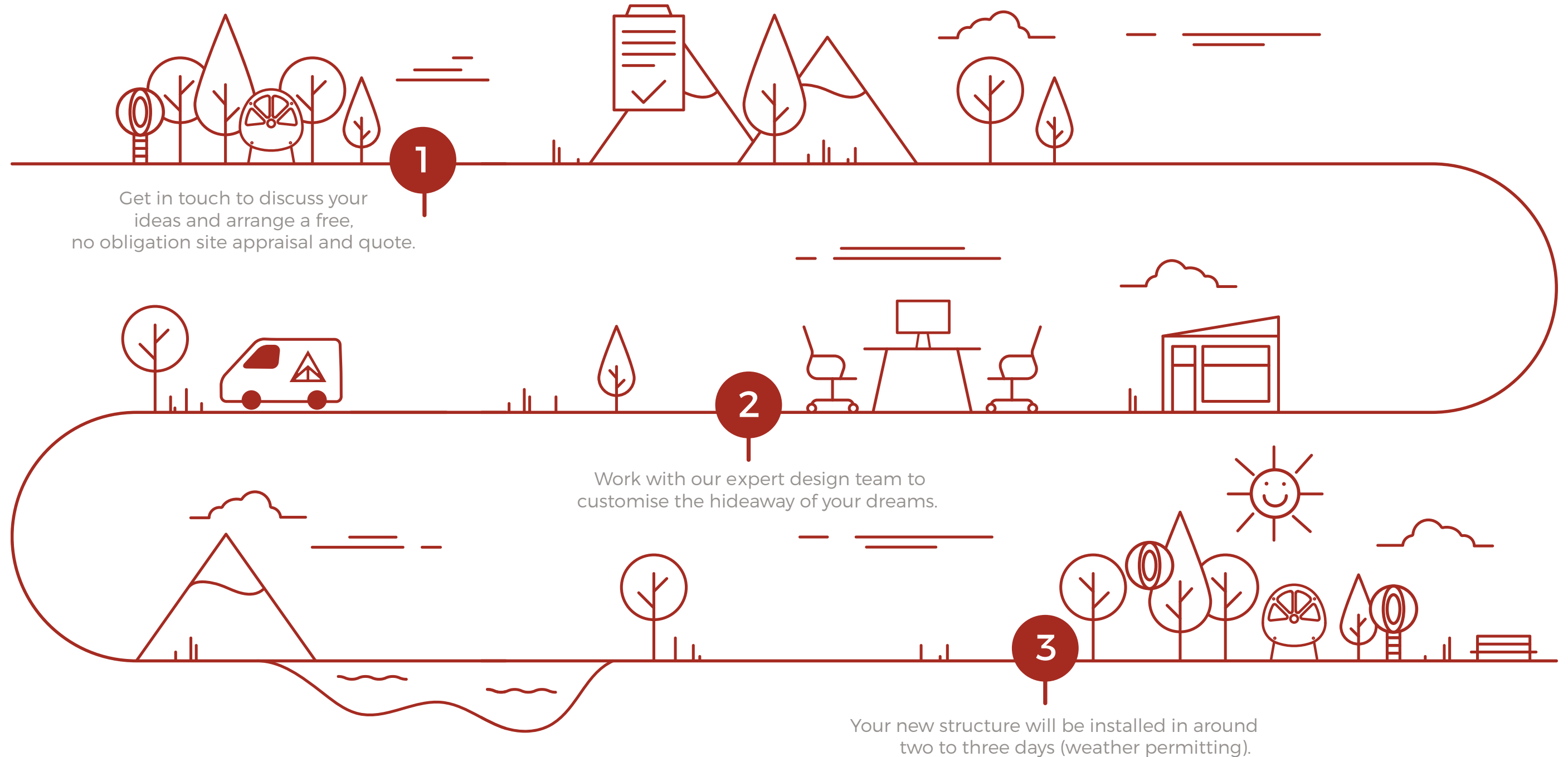
OUR EASY 3 STEP PROCESS

We're a passionate bunch bound by a common goal – to help you take your business sky high. Our structures are designed to be installed quickly and painlessly. This means you can be up and running in as little as four weeks.



Get in touch to arrange your installation now

01273 782 360



THE EXTENDED FAMILY

While life at Tree Tents began in the canopy, each structure in our extended family is designed to reconnect people with our wildest places. From lowland meadows to mountain tops, heavy woodland to the water's edge, each structure transforms the most remote and difficult locations into a world class escape. After all, everyone knows the most remote locations offer the greatest reward.



Our most innovative structure, the Fuselage, is inspired by modern aerospace design, offering a lightweight, robust and extremely portable accommodation. With the flexibility to be installed on the ground, raised on stilts or suspended from trees, this unique escape makes light work of the most challenging terrain.

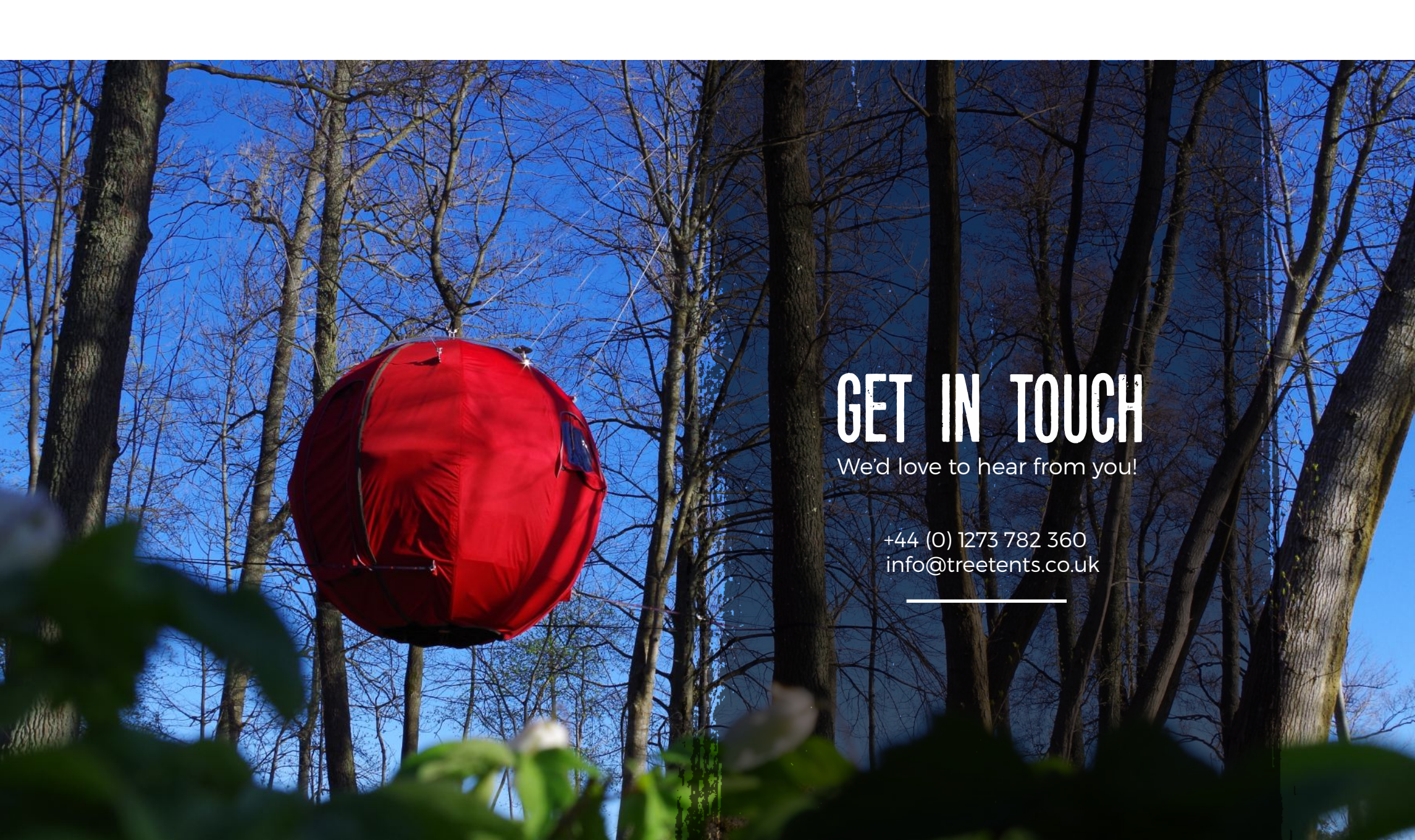


The Firma Ridge range of structures take inspiration from iconic ridge tents which we engineer into three variants. Auxiliary structures include the Firma Ridge WASH - an enclosed WC and shower unit; and the Firma Ridge COOK - an open sided, covered camp kitchen. These both support our live-in structures or any site needing vital amenities. Finally we offer the Firma Ridge Lodge - a large format living/accomodation unit with mezzanine space that can accommodate larger family groups.



Taking its simple form from the cross-section of its namesake plant, our Okra land-based cabins utilise a SIP (Structural Insulated Panel) system to offer a cost-effective and modular accommodation package.





GET IN TOUCH

We'd love to hear from you!

+44 (0) 1273 782 360
info@treetents.co.uk

THE WORLD'S GREATEST ESCAPES

treetents.co.uk





TREE TENTS®

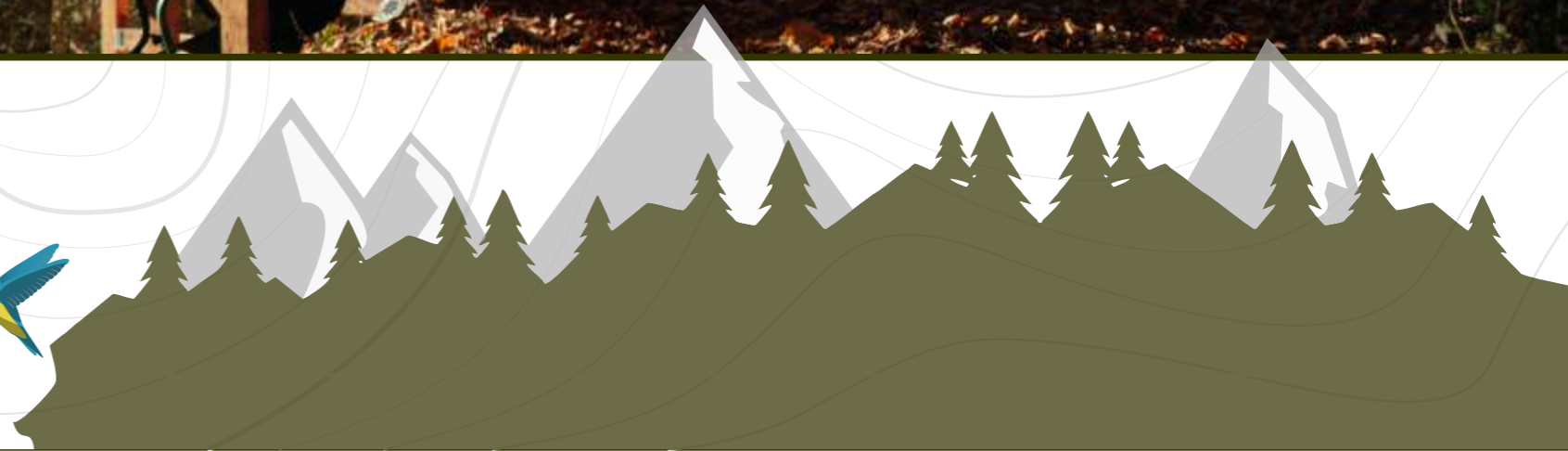
WILDERNESS ARCHITECTURE

BIRDHOUSE / OUTHOUSE
SPECIFICATIONS
&
COMBINATIONS



**TREE
TENTS®**

WILDERNESS ARCHITECTURE



INTRODUCTION

TWO'S COMPANY, THREE'S A VILLAGE...

When it comes to adding amenities to your site and accommodation package we believe in an holistic approach that doesn't cram everything into one space.

Your site is key here and it is all about the experience you create for guests to help them enjoy the outdoors by adding something a little different. Celebrate those midnight visits to the loo that are nostalgic of those camping trips of late night tip toeing in the dark while maybe spotting some wildlife along the way.

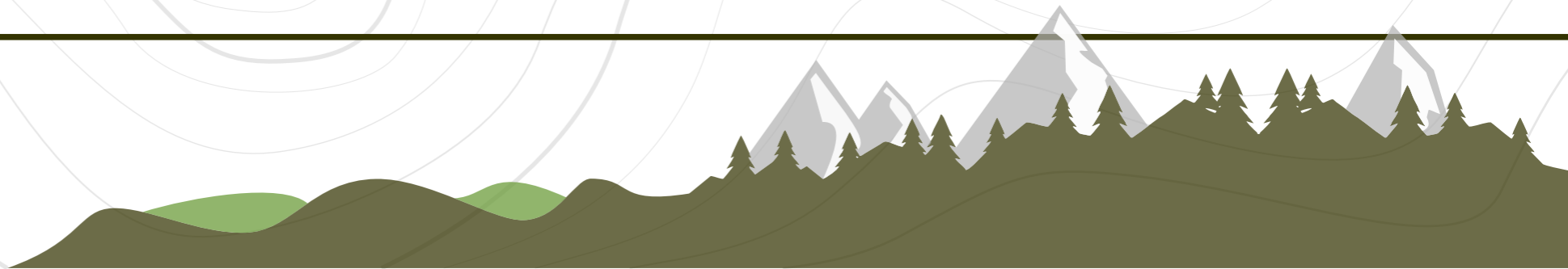
Linking up our Birdhouse and Outhouse structure with a purpose designed deck can offer a great set-up which also offers space for seating and outdoor cooking, anything you can think of to offer your guests.

Our units are all designed around the small space experience. We don't want it getting too close for comfort when trying to fit in a loo and wash facilities within the relaxation space. Why should there be compromise? Instead use it to your sites' advantage by adding a multi functioning deck to help separate those spaces. Guide guests into those small but memorable experiences which we think is one of the keys to a great site.

We've come up with some possible combinations but don't stop there - think how your site could evolve with longer walkways and paths and start to design your perfect getaway for guests to enjoy!



WILDERNESS ARCHITECTURE



UNIT PRICING

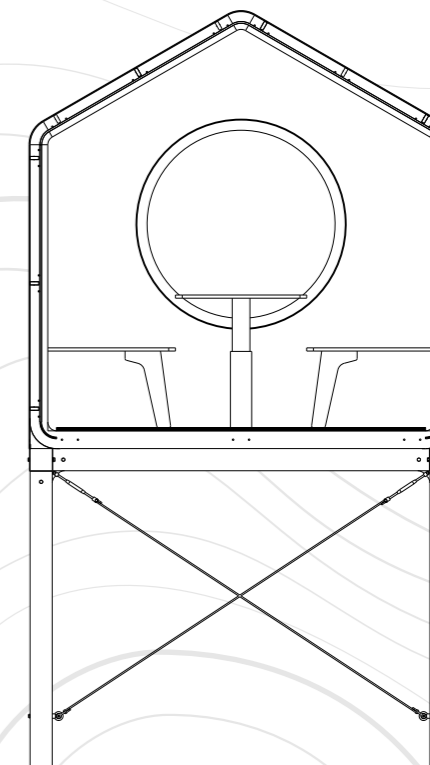


THE BIRDHOUSE...

A compact cabin for two.

Simplicity is the key with our Birdhouse Structure... A comfortable, lightweight structure that you can elevate with the birds while incorporating a large, circular window to take in the view or create a ground level nest to immerse in nature.

The Birdhouse can be covered with a choice of external cladding from a coated corrugated steel cladding for a contemporary feel to a slatted timber cladding for a more cabin like aesthetic. Inside layouts offer twin or double bed layouts with convertible seating areas, kitchen modules and fireplace or wood stoves.



BIRDHOUSE BASE UNIT: £22,000 (ALL PRICES EX. VAT)

INCLUDED:

3.6m LONG CNC CUT PLYWOOD FRAME / INSULATED FLOOR & MULTIFOIL INSULATED WALL & ROOF / ALUMINUM FRAMED, DOUBLE GLAZED FRONT AND REAR PIVOT OPENING CIRCULAR WINDOWS / EXTERIOR MEMBRANE & BATTENING FOR CHOSEN CLADDING / 12mm PRE-LAQURED BIRCH PLYWOOD INTERIOR WALL AND ROOF LINING / MEDITE TRYCOYA EXTERIOR END PANEL CLADDING / INSULATED DOOR / STAINLESS STEEL FIXINGS.

UNIT ASSEMBLY & INSTALLATION : FROM £3,600.00

SELF ASSEMBLY & INSTALLATION OPTIONAL

BIRDHOUSE COMPACT BASE UNIT: £18,000

A SHORTER BIRDHOUSE UNIT AT 2.6m LONG, OFFERING THE SAME SPECIFICATION AS THE MAIN SIZED UNIT ABOVE. IDEAL FOR TEAMING UP WITH THE MAIN UNIT TO OFFER EXTRA SLEEPING ACCOMMODATION FOR FAMILIES OR GROUPS. SEE OUR EXAMPLE UNIT COMBINATIONS ON PAGE 8.

OPTIONS (EXTERIOR):

CORRUGATED STEEL CLADDING (CHOICE OF COLOURS): + £0.00

SLATED TIMBER CLADDING: + £3,200.00

BIRDHOUSE STILT FRAME: + FROM £6,700.00

MADE FROM FRESH CUT BRITISH LARCH AND USING STAINLESS STEEL CONNECTION HARDWARE AND CROSS BRACING. INCLUDES GROUND SCREWS AND MOUNTS LARCH DECK, TIMBER AND ALUMINIUM ACCESS LADDER, DECK OVER-FRAME AND BALUSTRADE WIRE.

BIRDHOUSE LINK DECK: + FROM £4,500.00

USED TO LINK BIRDHOUSE AND OUTHOUSE STRUCTURES (SEE COMBINATIONS ON PAGE 6). MADE FROM TREATED TIMBER USING STAINLESS STEEL CONNECTION HARDWARE. INCLUDES GROUND SCREWS AND MOUNTS WITH LARCH DECK.

OPTIONAL EXTRAS (INTERIOR):

CONVERTIBLE SEATING/BED: + £1,800.00

BENCH SEATING WITH SUSPENDED TABLE WITH 100% MELTON WOOL COVERED FOAM MATTRESS AND BACK CUSHIONS CONVERTS INTO LARGE DOUBLE BED

BUNKBEDS: + £1,800.00

TWIN BUNK BEDS WITH 100% MELTON WOOL COVERED FOAM MATTRESSES.

WOOD STOVE & FLUE SET: + £1,900.00

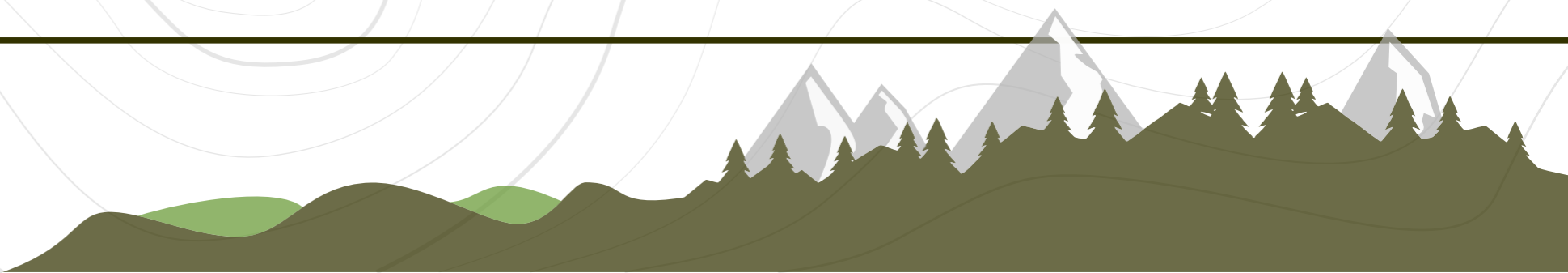
LED LIGHTING, 12v & USB SOCKET & MAINS HOOK-UP: + £450.00
(REQUIRES TYPICAL 16A ELECTRICAL SUPPLY CONNECTION NEAR UNIT)

LED LIGHTING, 12v & USB SOCKET & BATTERY HOOK-UP: + £800.00

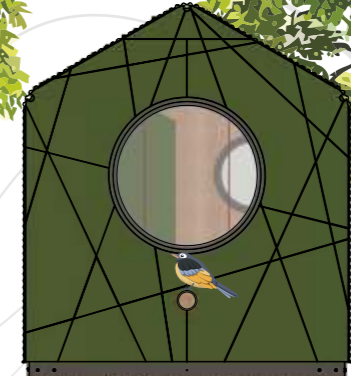
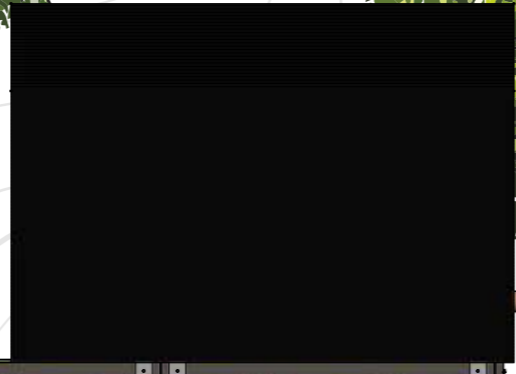
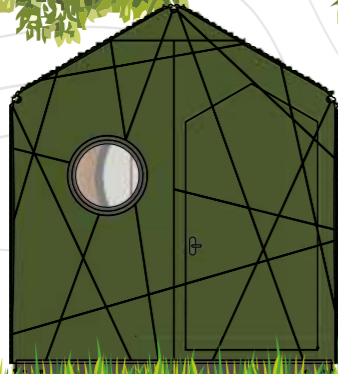
KITCHEN UNIT: + £2,400.00

DURAPLY PLYWOOD WORKTOP AND STORAGE UNIT INCORPORATING STAINLESS STEEL CAMPER SINK UNIT WITH TAP, AUTOMATIC 12V WATER PUMP & FRESH WATER CONTAINER, 35L COOL-BOX, AND COUNTER TOP SINGLE GAS HOB.

OFF-GRID SOLAR KITS, ON-GRID ELECTRIC HOOK UP AND HEATING SYSTEMS ALSO AVAILABLE - PLEASE ENQUIRE FOR FURTHER INFORMATION



UNIT SPECIFICATIONS



CONVERTIBLE DINING / SLEEPING AREA

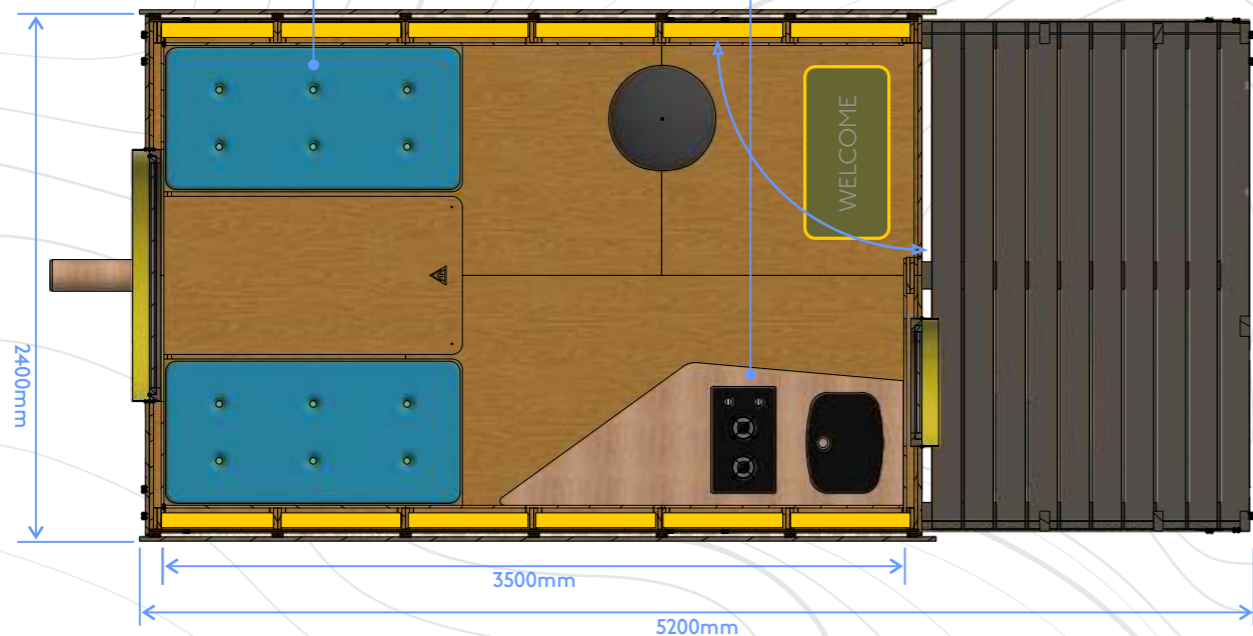
BENCH SEATING AROUND SUSPENDED TABLE WITH WOOL SEAT CUSHIONS/BED MATTRESS. TABLE EASILY DROPS DOWN TO CONVERT AREA INTO A 2.1m x 1.4m DOUBLE BED.

KITCHEN MODULE

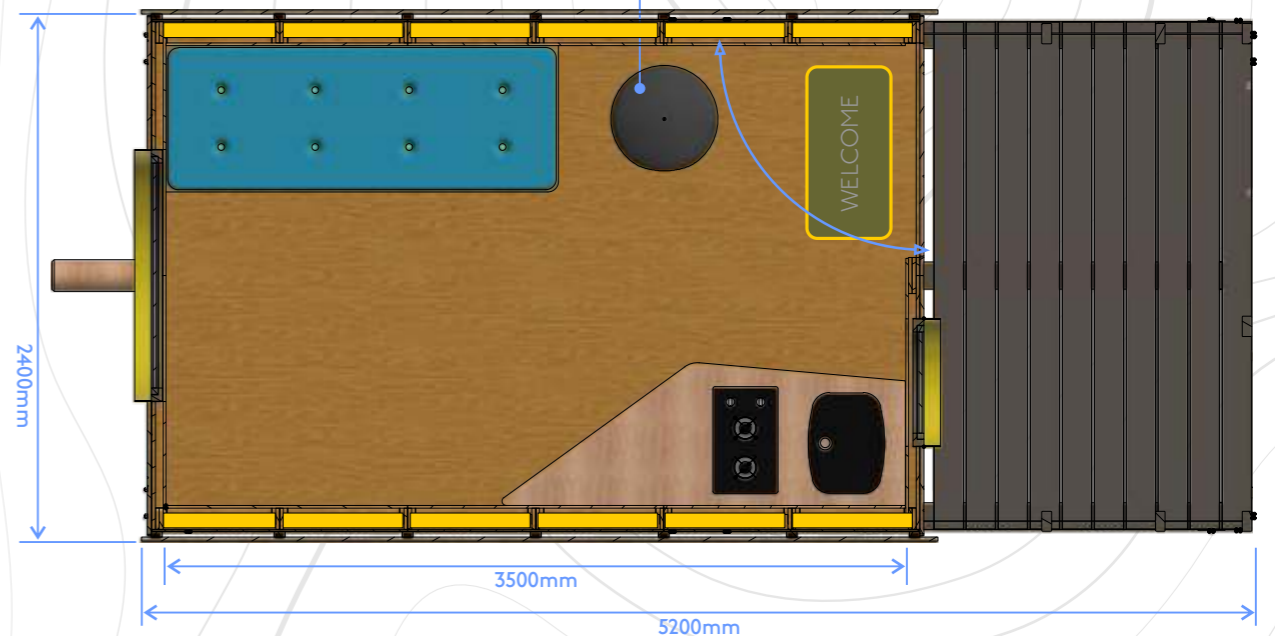
OPTIONAL KITCHEN MODULE INCORPORATING LPG OR ELECTRIC INDUCTION HOB, SINK, FRIDGE AND STORAGE

WOODSTOVE OR FIREPLACE

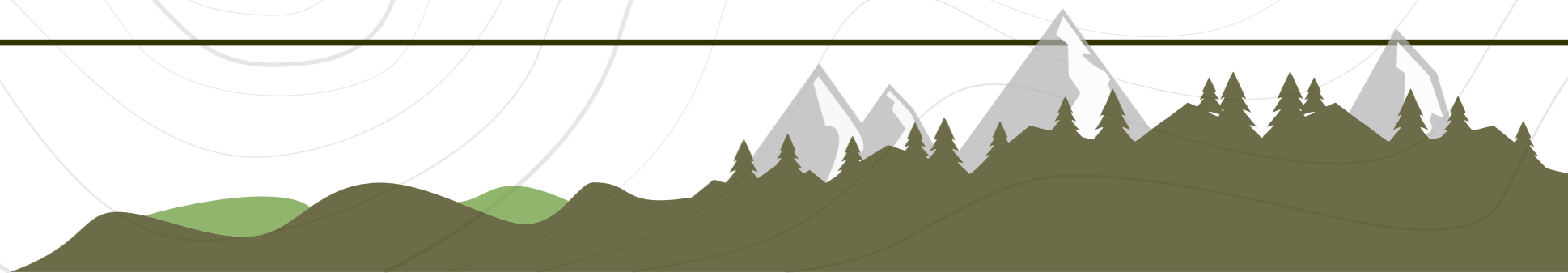
OPTIONAL 3.9 kW (87.4% EFFICIENT) ANEVAY 'TRAVELLER' WOODSTOVE WITH STAINLESS STEEL, TWIN WALL FLUE. OR SUSPENDED BIO-ETHANOL FIREPLACE



FLOORPLAN: CONVERTIBLE DOUBLE BED / SEATING + KITCHEN + FIREPLACE



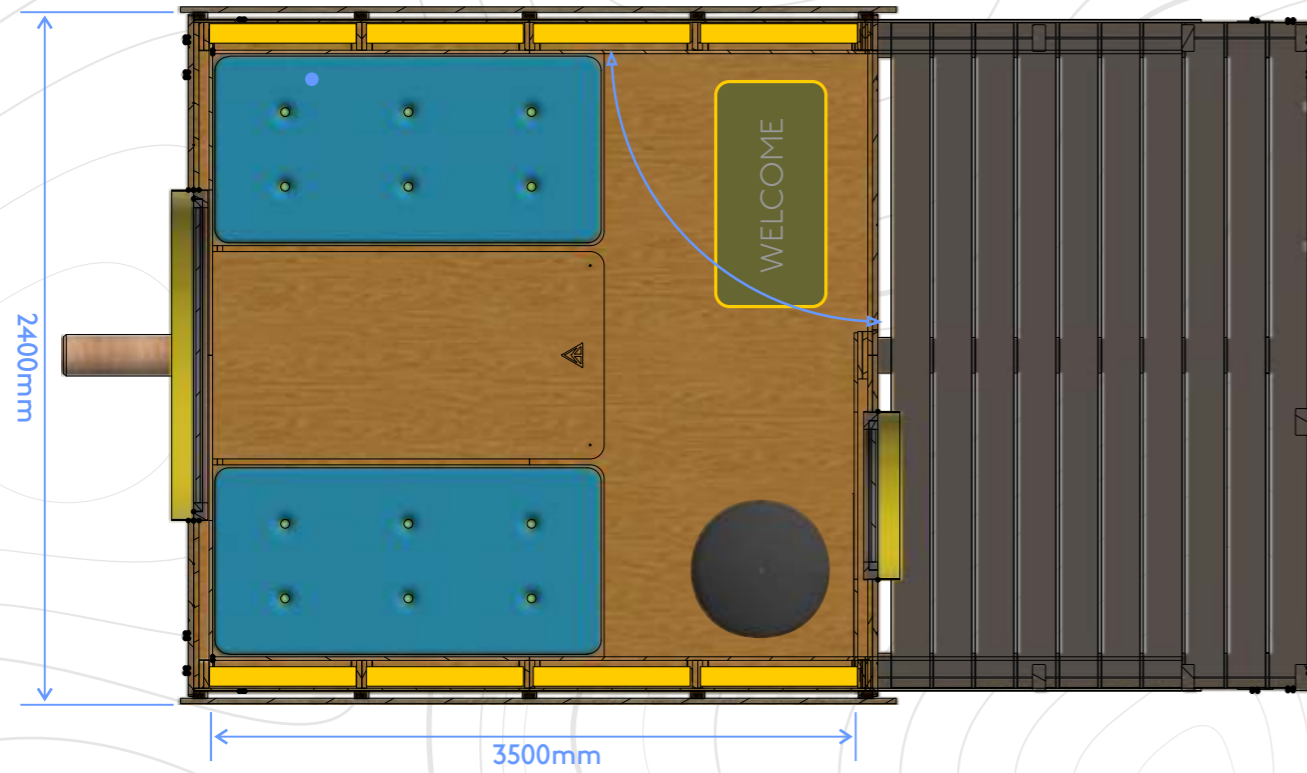
FLOORPLAN: BUNK BEDS + KITCHEN + FIREPLACE



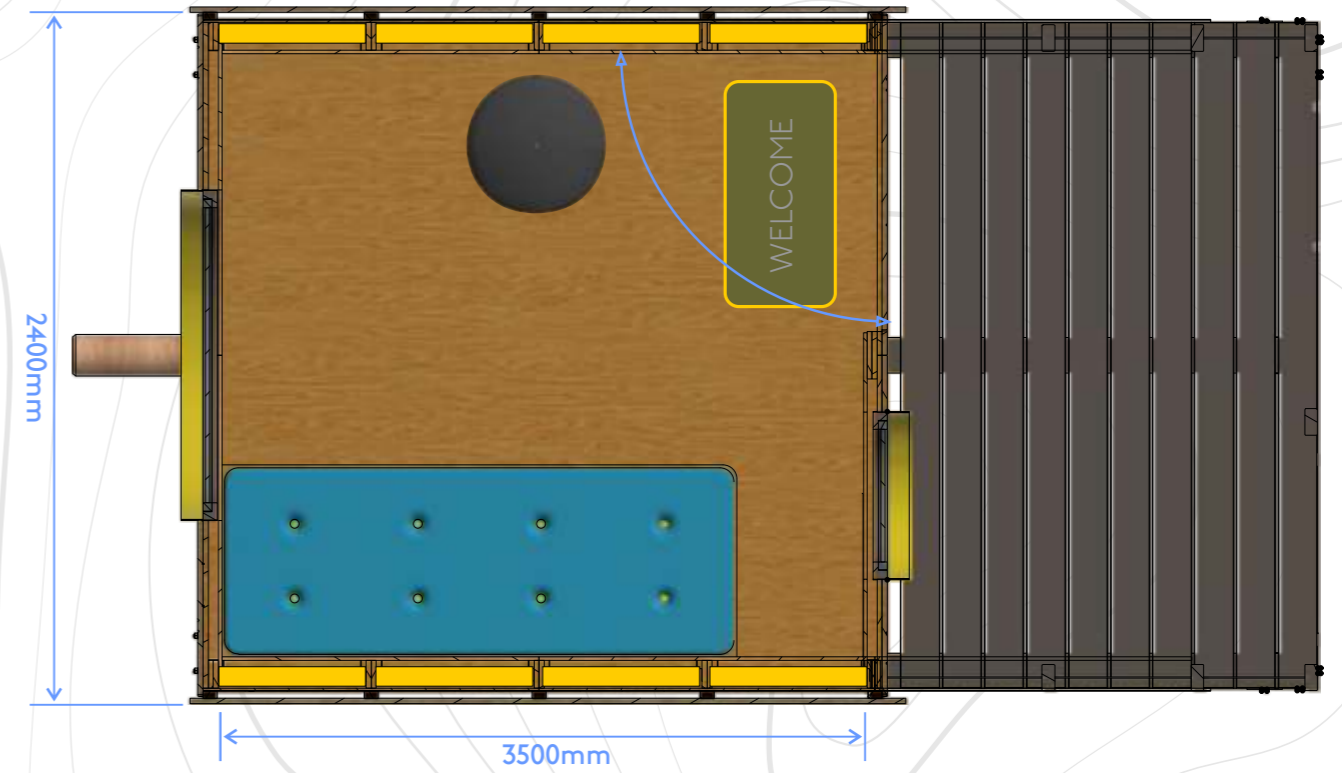
UNIT SPECIFICATIONS



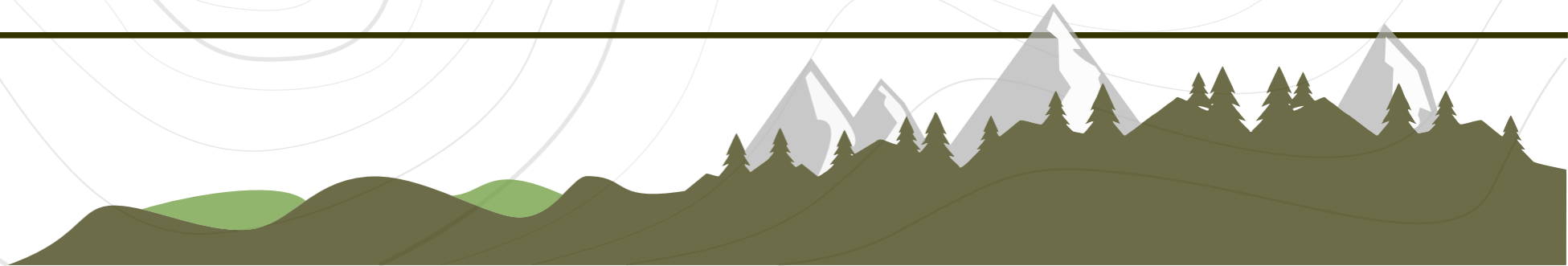
BIRDHOUSE 'COMPACT' FLOOR PLANS



FLOORPLAN: CONVERTIBLE DOUBLE BED / SEATING + FIREPLACE



FLOORPLAN: BUNK BEDS + FIREPLACE



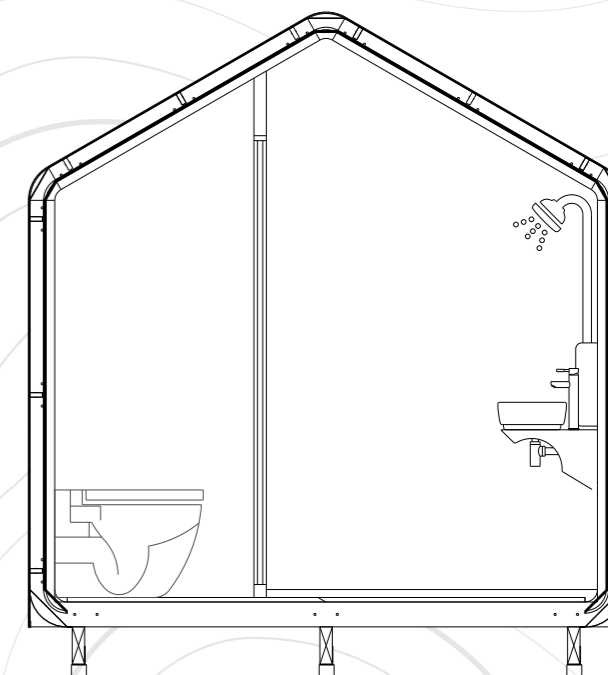
UNIT PRICING



THE OUTHOUSE...

For whenever nature calls.

When it comes to on-site facilities the humble outhouse always seems to take a second seat to some of the great designs we see in accommodation structures. This is something we've always wanted to address and so our Outhouse unit has been designed to offer a great looking structure with all the equipment needed for your guests comfort with on and off-grid options available.



OUTHOUSE BASE UNIT: £18,000 (ALL PRICES EX. VAT)

INCLUDED:

2.4m LONG CNC CUT DURAPLY FRAME / OSB EXTERIOR SHEATHING / 100mm PIR INSULATED FLOOR, WALL & ROOF / ALUMINUM FRAMED, DOUBLE GLAZED FRONT PIVOT OPENING CIRCULAR WINDOW / 35mm THICK TRANSLUCENT AND INSULATING MULTIWALL POLYCARBONATE BACK WALL / EXTERIOR MEMBRANE & BATTENING FOR CHOSEN CLADDING / 12mm PRE-LAQUERED BIRCH PLYWOOD AND WATERPROOF WALL BOARD INTERIOR WALL AND ROOF LINING / LINELOUM FLOORING / MEDITE TRYCOYA EXTERIOR END PANEL CLADDING / INSULATED DOOR / STAINLESS STEEL FIXINGS.

UNIT ASSEMBLY & INSTALLATION : FROM £3,200.00

SELF ASSEMBLY & INSTALLATION OPTIONAL

OPTIONS (EXTERIOR):

CORRUGATED STEEL CLADDING (CHOICE OF COLOURS): + £0.00

SLATED TIMBER CLADDING: + £2,800.00

OUTHOUSE STILT FRAME: + £6,300.00

MADE FROM FRESH CUT, EUROPEAN OAK AND USING STAINLESS STEEL CONNECTION HARDWARE AND CROSS BRACING. INCLUDES GROUND SCREWS AND MOUNTS LARCH DECK, TIMBER AND ALUMINIUM ACCESS LADDER, DECK OVER-FRAME AND BALUSTRADE WIRE.

OPTIONAL EXTRAS (INTERIOR):

OFF-GRID WATERLESS TOILET (SEPARATING): + £650.00

'SEPRETT VILLA' URINE DIVERTING TOILET WITH COMPOSTABLE WASTE COLLECTION AND 12V VENTILATION FAN.

OFF-GRID WATERLESS TOILET (INCINERATION): + £3,800.00

'CINDERELLA FREEDOM' PROPANE GAS POWERED INCINERATION TOILET . INCINERATES ALL TOILET WASTE AT HIGH TEMPERATURES PRODUCING A MINIMAL AMOUNT OF STERILE ASH.

SHOWER UNIT + £1,100.00

1600 x 800mm WALK-IN SHOWER TRAY, SHOWER WASTE TRAP, TWIN SHOWER MIXER VALVE, SHOWER HEAD, SIDE CLEAR ACRYLIC SHOWER SCREEN AND WATERPROOF WALL CLADDING.

HAND WASH BASIN: + £800.00

ALAPE STAHLFORM 505 WALL MOUNTED BUCKET SINK WITH WALL MOUNTED INDUSTRIAL STYLE MIXER TAP, TRAP AND WASTE WITH UNDER SINK STORAGE SHELVES.

OFF-GRID LPG WATER HEATING: + £600.00

CAMPLUX BW158BCP6 TANKLESS GAS WATER HEATER, GAS REGULATOR, WATER PUMP & PLUMBING KIT TO CONNECT TO SHOWER & BASIN UNITS

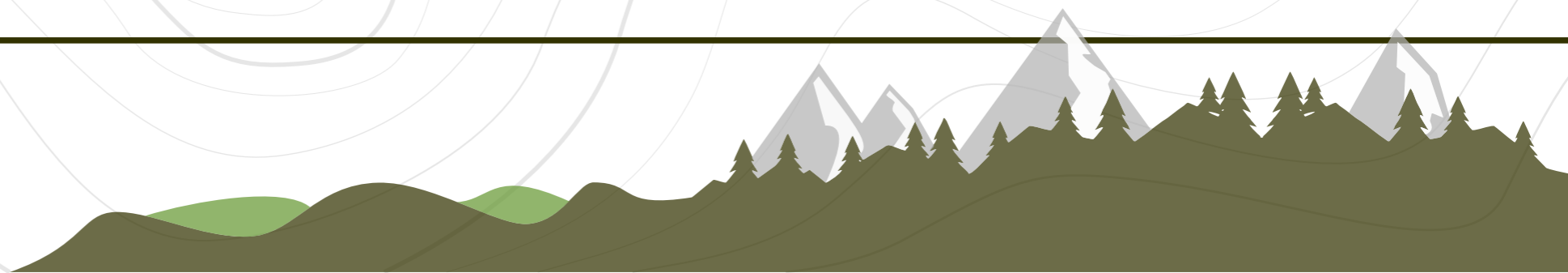
LED LIGHTING, 12v & USB SOCKET FOR MAINS OR BATTERY

HOOK-UP: + £350.00

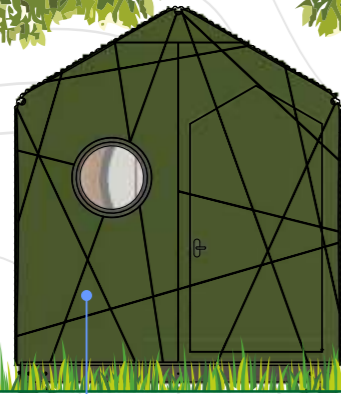
(REQUIRES TYPICAL 16A ELECTRICAL SUPPLY CONNECTION NEAR UNIT) OR 12V BATTERY SUPPLY



WILDERNESS ARCHITECTURE

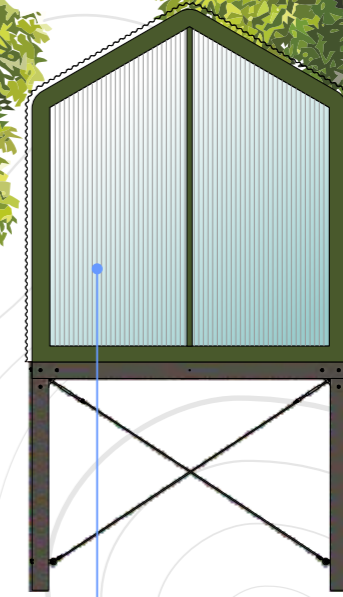
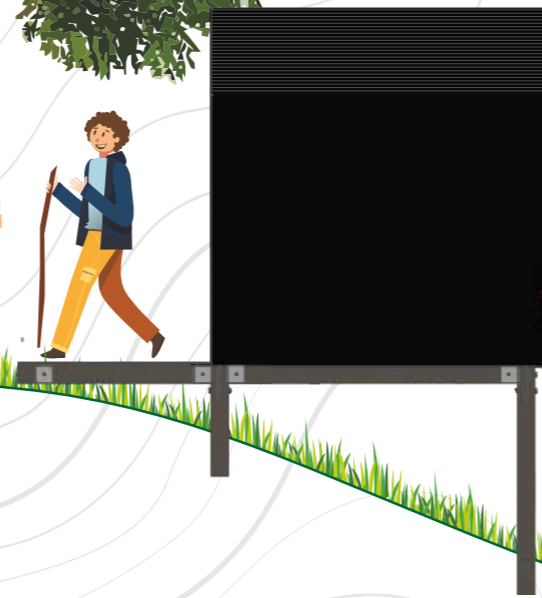


UNIT SPECIFICATIONS



MEDITE TRYCOYA END PANELS

HIGH PERFORMANCE EXTERNAL CLADDING PANELS IN NATURAL HARD WAX OIL OR PAINTED FINISH WITH OPTION TO ADD CNC CUT PATTERNS TO FACE



MULTIWALL POLYCARBONATE WALL PANEL

INSULATIVE & TRANSLUCENT END WALL PANEL TO OFFER PRIVACY & GREAT LIGHT TRANSMISSION INTO THE STRUCTURE ALONG WITH A WATER RESISTANT SURFACE NEXT TO THE SHOWER UNIT INSIDE.

WALK-IN SHOWER

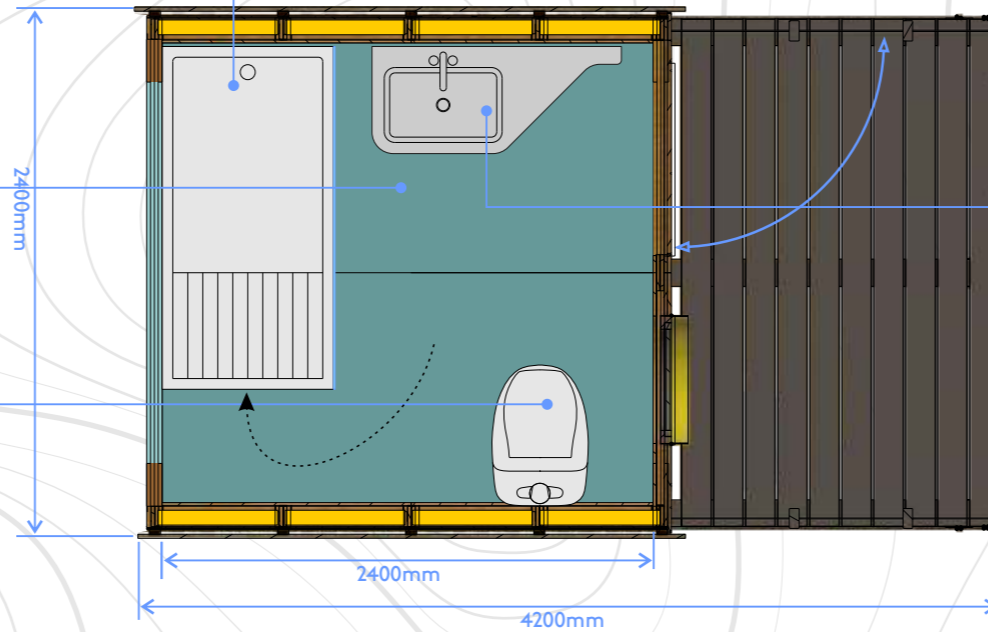
1600 x 800mm ACRYLIC SHOWER TRAY WITH CLEAR SIDE PANEL AND A CHOICE OF ELECTRIC OR GAS POWERED WATER HEATER.

MARMOLEUM FLOORING

SUSTAINABLE AND DURABLE WATER RESISTANT FLOORING CREATED FROM 97% NATURAL RAW MATERIALS AVAILABLE IN A WIDE RANGE OF COLOURS AND FINISHES.

TOILET

STANDARD FLUSHING WC FOR CONNECTION TO MAINS SEWAGE OR SEPTIC / WATER TREATMENT TANK OR OPTIONS OF 'OFF-GRID' WATERLESS SEPARATING AND INCINERATION TOILETS.

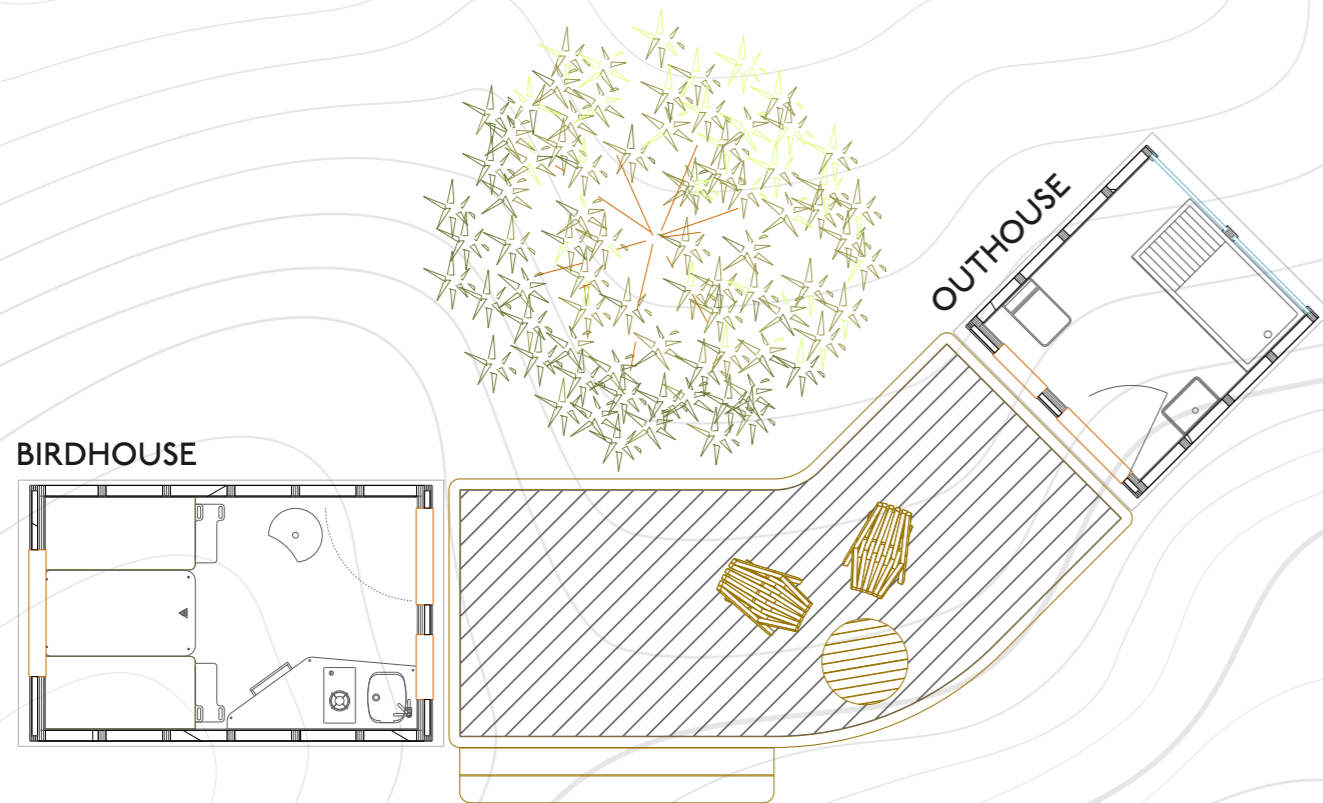


WASH HAND BASIN

COUNTERTOP BASIN ON BIRCH PLYWOOD STORAGE SHELF UNIT. HOT & COLD MIXER TAP.



UNIT COMBINATIONS



COMBO 01 BIRDHOUSE & OUTHOUSE COMBINATION

A perfect set-up for a cosy getaway for two....
Add extras like a hot tub, seating and fire pit.

EXAMPLE PRICING:

- S#1: BIRDHOUSE + DOUBLE BED / SEATING + KITCHEN MODULE + FIREPLACE:
- S#4: OUTHOUSE + TOILET + SHOWER + BASIN + LIGHTING:
- L#1: LINK DECK:

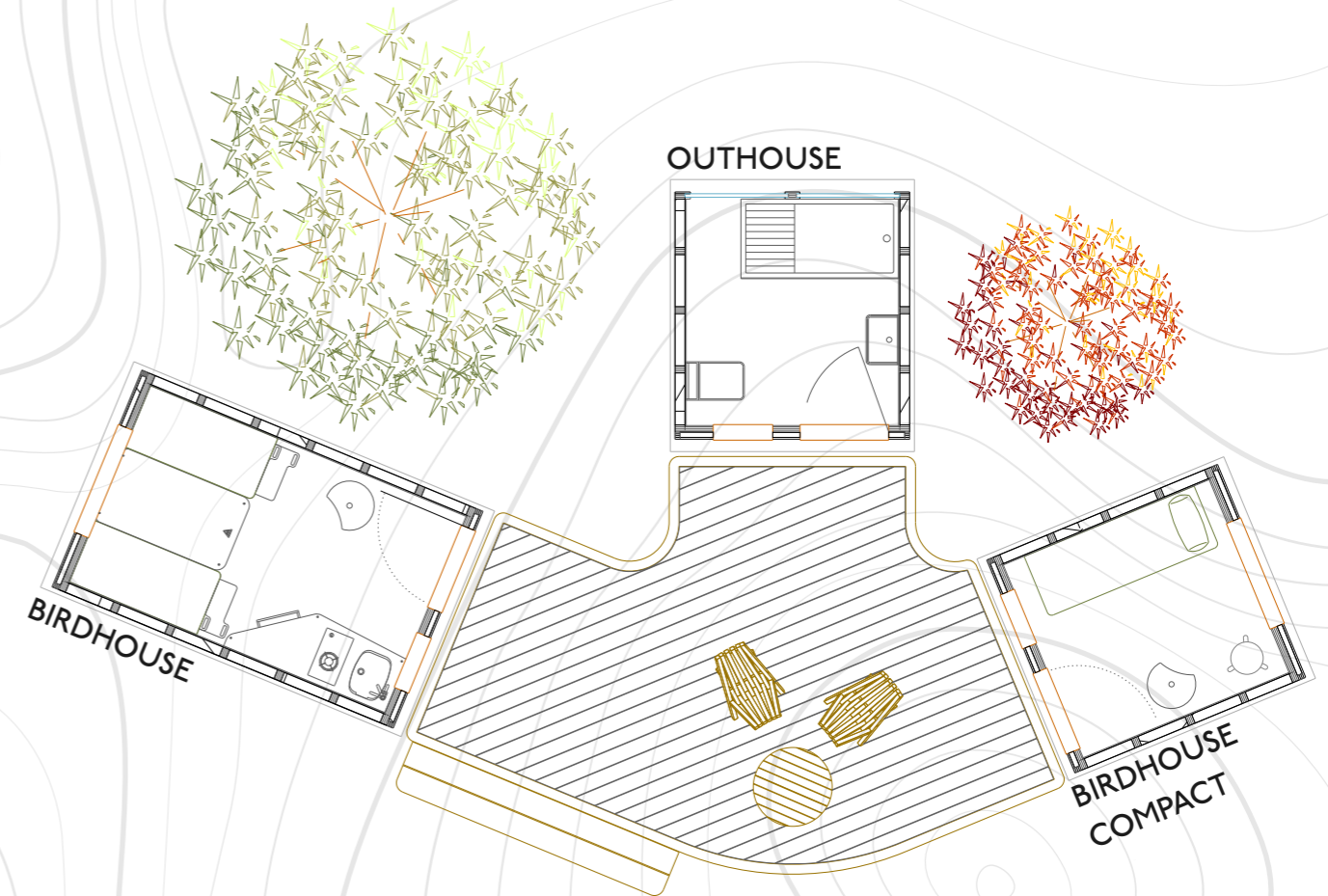
PRICE (EX.VAT):

- £30,400.00
- £23,550.00
- £4,500.00 EST.

TOTAL:

Excludes delivery & installation.

£58,450.00



COMBO 02 BIRDHOUSE, OUTHOUSE & BIRDHOUSE COMPACT COMBINATION

The ideal family or small group base camp....

EXAMPLE PRICING:

- S#1: BIRDHOUSE + DOUBLE BED / SEATING + KITCHEN MODULE + FIREPLACE:
- S#3: OUTHOUSE + TOILET + SHOWER + BASIN + LIGHTING:
- S#2: BIRDHOUSE COMPACT + BUNK BEDS + FIREPLACE:
- L#2: LINK DECK:

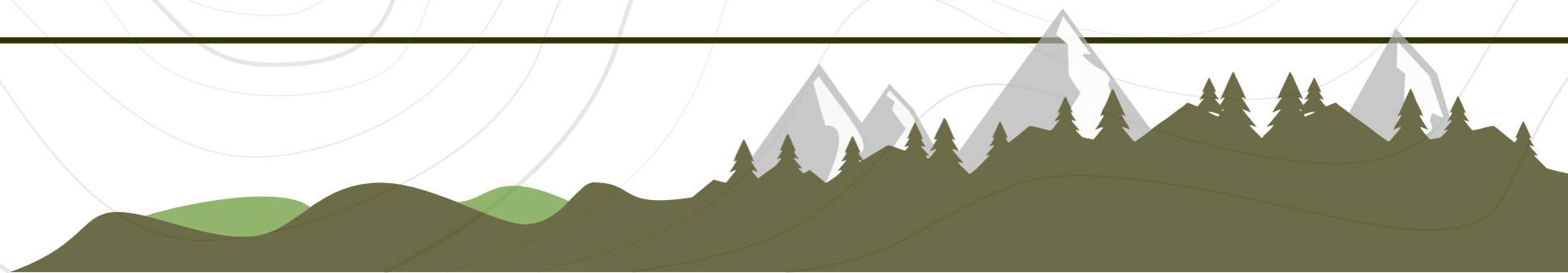
PRICE (EX.VAT):

- £30,400.00
- £23,550.00
- £25,000.00
- £7,500.00 EST.

TOTAL:

Excludes delivery & installation.

£86,450.00



Oakfuskee Adventure Amenities



Proposal for a
Canopy Walk
& Adventure
Playground

Prepared By:

**Beanstalk
Builders**

March 5, 2024

Beanstalk Builders

Our Mission Statement

At Beanstalk Builders, we strive to give people outdoor adventures with positive experiences, to foster an appreciation for the environment, to provide on-going injections of self-esteem, development of physical and mental fitness, and revitalization of the human spirit. In other words – to make the world a better place through outdoor adventures.

It is a very simple formula: When people feel good about themselves, they relate to others and the environment in a more positive way, thereby creating a powerful multiplier effect for spreading goodness. Sound corny? Just watch the glow radiating from people who accomplish something unusual or challenging like conquering a climbing tower.

At Beanstalk Builders, we try to achieve personal growth opportunities in all our designs. Of course, crossing a wilderness footbridge provides a different experience than climbing to the top of a Beanstalk Climbing Tower. But with a custom-designed, picturesque, and intriguing footbridge, people feel a difference on the other side of that simple trek. In other words, no matter the project, every Beanstalk build is designed to create a new outlook for each participant, while bringing success to our clients.



Beanstalk Team



Mike Fischesser

- ▶ Mike is the founder and principal designer for Beanstalk Builders. He is a former Program Director for North Carolina Outward Bound School, and former Director of the National Training Institute and National Coordinator for Programs and Safety for Outward Bound USA. From 1989-99, he was founder and owner of Alpine Towers Inc., one of the most accomplished challenge course companies in the world. Renowned for his outdoor leadership skills, Mike is founder and executive director of The American Adventure Service Corps (TAASC). Outward Bound USA awarded Mike the 2015 Kurt Hahn Award, which recognizes outstanding service and leadership. As it relates to safety, Mike was the brainchild and founder of what is now known as the Association for Challenge Course Technology (ACCT). Mike is a true pioneer of the industry and the dreamer behind many of our designs.

mike@beanstalkjourneys.com
828-443-3795



Isaac Hoff

- ▶ Isaac is the Director of Operations at Beanstalk Builders and works closely with clients throughout the design, build, and long after project completion to ensure our client's goals are met and relationships are maintained. With over 20 years of industry experience, Isaac brings a wealth of knowledge to the table.

isaac@beanstalkjourneys.com
828-443-6964



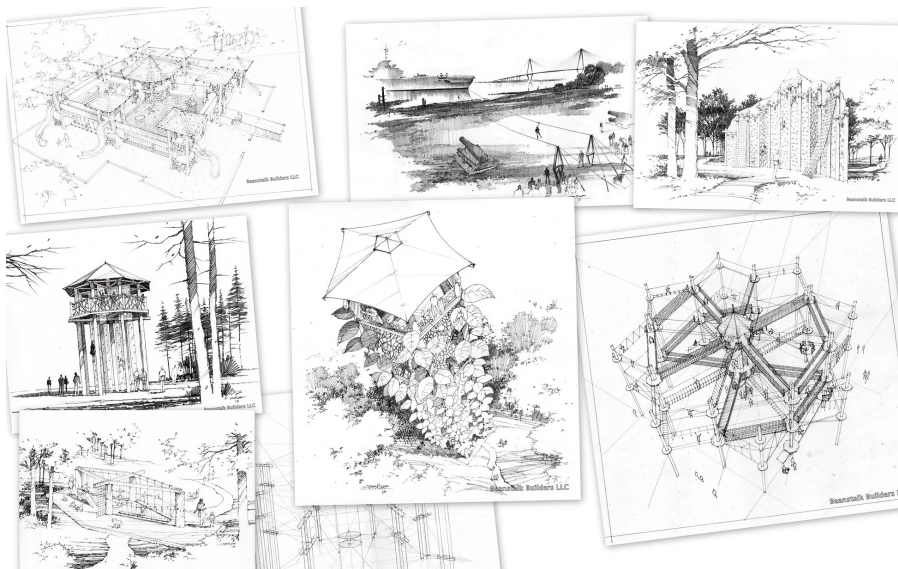
Marcus McCrea

Marcus has been a Project Lead with Beanstalk Builders since 2015. He came to us with years of industry experience and is a true craftsman at his trade. Marcus is a key player in creating designs that turn dreams into realities.

marcus@beanstalkjourneys.com
828-764-7326

Project Approach

- ▶ *· Full-service-* With safety at the forefront from start to finish on all of our designs, we provide a full-service ticket to adventure. We work closely with our clients to design, build, train and certify staff, and annually inspect our builds. We remain available to our clients after the build for all needed questions or support.
- ▶ *· Custom-* Beanstalk Builders specializes in custom designs. Many amazing designs have come from simply listening to what the client wants and needs. After assessing the site and resources, a creative collaboration of engineering, craftsmen, arborists, and years of experience always produce something spectacular, that we then can turn into reality. We are excited to work with you from start to finish to develop a custom design that best highlights the land and achieves the goals for the park.
- ▶ *· Natural Based Play-* We believe that creating an environment that mirrors a natural environment is the best way to engage the imagination and creativity of a child. For us, our focus is to simulate natural environments. The trees, the forest, the earth. In this way, we believe we are enabling children to appreciate nature and learn about their environment in a really fun way. Another area of focus for us is to create environments that enable problem solving. Traditional playgrounds often have a clear/direct path and or method to move through. As we design, we think to how a child might use their imagination in traversing a bendy log bridge or how the child might navigate a netted slack line to get to the top of the tree house. But the greatest reason, is the simplest reason, to inspire more play. Research has shown that natural play structures more than double the amount of playtime a child experiences when compared to traditional play structures. Play is so critical to childhood development.



Project Approach

Black Locust Log Construction

Beanstalk Builders proposes black locust log construction for this build. This will not only add to the aesthetics of the course, it will decrease maintenance needs, and increase the overall life of the structure.

Locust harvested in the mountains versus the lowlands/fields are one of the longest lasting wood products available. This is due to the slow growth rate in the harsh mountain conditions (visible by the close grow rings).

“Black Locust (*Robinia Pseudoacacia*) is the strongest and most rot resistant wood indigenous to North America. It makes an incredibly resilient and durable decking material that will remain beautiful and withstand years of outdoor exposure.

Nothing beats Black Locust for sustainability and durability. The wood is naturally rot-, decay-, mildew-, and insect-resistant – the perfect choice for outdoor projects in all climates.

Building with Black Locust is also a sound environmental choice. Black Locust grows faster than any other known hardwood tree. Unlike Brazilian Ipe, Black Locust does not contribute to tropical deforestation. Black Locust is also known as false acacia, or Chinese teak (due to its resemblance to teak).” Reference Robidecking.com



Project Highlights

Everyone's Adventure Playground

- Adventure Tower 8'
 - Byron's Maze
 - Climbing Wall 8'
 - Slides
 - Zeke Bridge
- Swing Set
 - 2 Swings
- Sky Hammock 16'
- Bouldering Forest
- Stump walk
- Poured Rubber Surfacing
- 25'x25' Pavilion

Canopy Walk

- 1,500 ft of suspension bridges, longest canopy walk in the country
- Partially ADA accessible design
- 16 Lookout tower platforms



Canopy Walk Sample Photos



Playground Elements



Adventure Tower



Zeke Bridge



Byron's Maze

Playground Elements



Swing Set



Sky Hammock



Climbing Wall

Playground Elements



Pavilion



Bouldering Forest

Budget & Timeline

Our Design Process

We work closely with our clients to develop custom designs that fit their vision, goals and work well with the natural landscape. Our design process includes:

- Site visit and concept overview meeting with client to confirm overall direction and goals for playground.
- Concept presentation and review with client of the top view and layout of design.
- Design presentation and review with client of overall playground design, elevations, and label of play elements.

Design Phase Budget: \$40,000

Build Phase

Jobs are scheduled per order of receipt of signed agreement and first deposit at a date agreed upon by both parties. Below is a schedule outline of the project timeline:

- Phase 1: Award of contract
- Phase 2: Payment of first draw, scheduling of start date
- Phase 3: Ordering of materials and supplies
- Phase 4: Break Ground
- Phase 5: Installation of course
- Phase 6: Punch list and final adjustments
- Phase 7: Commencement inspection and final walkthrough with Client
- Phase 8: Enjoyment for All

Time frame is approximate, subject to change pending weather setbacks, installation challenges (i.e., rock problems with hole drilling), etc.

Beanstalk Builders will strive to follow this timeline to the best of their ability.

Playground Build Phase Budget: \$1,000,000

Canopy Walk Build Phase Rough Order of Magnitude: \$3,700,000

pending final design & engineering requirements

**Due to the everchanging market, pricing provided in this proposal expires 6 months after the date listed above. Please reach out for updated pricing information*

Projects Within Scope

*McGalliard Falls Suspension Bridge
Valdese, North Carolina*

[Video Tour](#)



Projects Within Scope

EMS Family Playground

Cherokee, North Carolina

<https://www.beanstalkbuilders.com/cherokeeplayground>



Projects Within Scope

Harris YMCA Playground

Charlotte, North Carolina

<https://www.beanstalkbuilders.com/harrismca>

